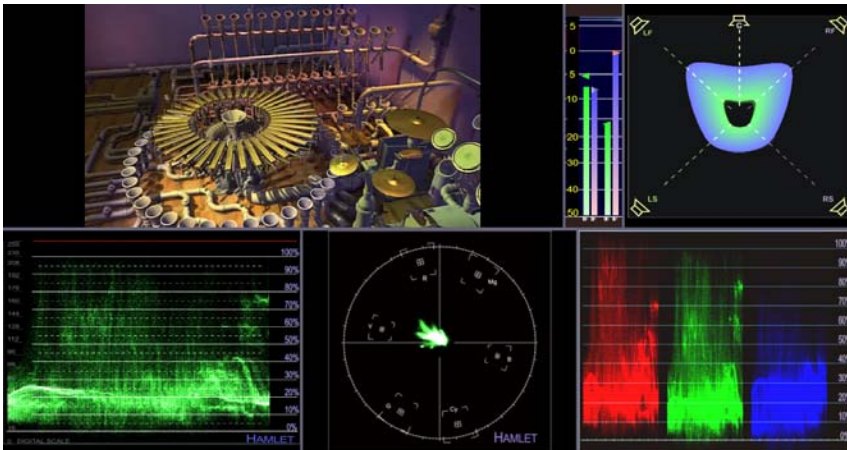


A REAL-TIME TELEVISION MONITORING, AND SIGNAL ANALYSIS SOFTWARE PLATFORM, WITH AUTOMATIC AND OBJECTIVE ANALYSIS OF HD444, HD, SD, HDV, DV OR OFF LINE AVI'S, VOB'S, MPEG OR WINDOWS MEDIA FILES.



The Hamlet VidScope is a software based television monitoring and measurement tool. Operating on a Windows platform, the Waveform monitor, Vectorscope and associated Surround Sound 3D Audio displays with the Picture can all be displayed on the PC's monitor screen, stored or transmitted as required.

The real time Hamlet VidScope displays look like those on conventional waveform monitors with variable intensity, persistence and graticule brightness. The Audio bar graphs displays have peak hold and may have the associated graticules scales and ballistics selectable from digital, VU, PPM and Nordic etc. The user can scale all displays to be any size from full screen to thumbnails. Screen Layout permits a quad split display. All layouts can be saved with the other VidScope setting as users defined presets for convenient recall. Waveforms can be displayed in field, frame and line select modes. In Line select mode all frame's lines are overlaid in real time with the recurrent features displayed in higher intensities. Horizontal scaling can be set between 1H and full frame and amplitude between half scale and x 10. Luminance only, Chrominance, YCrCb or RGB parades or stacks can be displays as can statistical and gamut displays.

Markers can be inserted into the preview display to show the region being investigated. IN Vector Mode a standard graticule is shown with scaling of 75 or 100% or variable gain.

**There are 5 versions:**

**VidScope™ HD444 (HD-SDI, HDV, off line) Dual Link**

**VidScope™ HD (HD-SDI, HDV, off line)**

**VidScope™ SD (SD-SDI, DV, off line)**

**VidScope™ HDV (DV, off line, dv25,dv50)**

**VidScope™ DV (DV, off line, dv25,dv50)**

DV where the source video can be either camera direct DV via a Firewire IEEE-1394 port or from off-line video files.

SD & HD versions for working with HD and SDI cards from:

Blackmagic, Bluefish, Skymicro ...

## Features and Functions

- Multi-window display
- Waveform monitor and Vectorscope, all modes
- Line select, line, field, frame, progressive
- new intuitive surround sound 3D polar display of amplitude, phase and frequency
- Audio levels, phase, waveform, monitor
- Video preview monitor, safe areas
- VTR control, time code, capture
- Gamut displays and time code logging of errors
- SnapShot™ modes enabling comparison of traces or picture content
- Displayed on PC screen, transmit or email

# TECHNICAL SPECIFICATION

## SYSTEM REQUIREMENTS

Windows-based desktop PCs older than 2002 may not be able to run it or be slow.

\* Windows-based notebook PCs older than 2003 may not be able to run it or be slow.

\* Apple Macintosh computers are not supported.

### Minimum configuration:

\* Operating system: Windows XP Home with DirectX 9.0 or higher installed.

\* CPU speed: Intel(r) Pentium(r) PIII 1.8 GHz

\* System memory (RAM): 256MB

\* 200MB Free hard-disk space

\* 3D graphics card: 3D-capable video card with 32MB VRAM

\* 1024x768, 32-bit true colour screen LCD or CRT

### Recommended configuration:

\* Operating system: Windows XP Home or Pro

\* CPU speed: Intel(r) Pentium(r) P4 2.4GHz+ or AMD 2400xp+

\* System memory (RAM): 512MB or more

\* 2GB Free hard-disk space

\* 3D graphics card: AGP or PCI-X with 64MB VRAM or greater

\* 1024x768, 32-bit true colour screen

\* Firewire IEEE1394 ports and/or Video capture card

**WARRANTY:** - 1 Year.

Extendable free on registration: - To 2 Years

By using the service area of our web site

<http://www.hamlet.co.uk/serv.html>

## ORDERING INFORMATION

**VidScope™ HD444 Dual Link**

**VidScope™ HD (HD-SDI, HDV, off line)**

**VidScope™ SD (SD-SDI, DV, off line)**

**VidScope™ DV (DV, off line, dv25, dv50)**

**VidScope™ HDV (DV, off line, dv25, dv50)**

This software is available for 30 day free unrestricted trial from the Vidscope web site:- [Vidscope.tv](http://Vidscope.tv)

This software can be ordered and paid for from the Vidscope web site:- [Vidscope.tv](http://Vidscope.tv)

### Options

None

Specifications and features herein are subject to change without prior notice. Hamlet Video International Limited products are covered by a number of Applied or Granted UK, North American and World Patents. Prior art is claimed in All Territories on features and functions incorporated in the product designs herein. Hamlet is a registered Trademark of Hamlet Video International Limited. Flexiscope, Whichwire and Videoscope are registered Trademarks of Hamlet Video International Limited. Monitor Scope, Digi Scope, Adept, LCD Scope, Protean, Digi Gen, VidScope, GenPen, Micro Scope, Pico Scope, PC Scope, Chameleon, Digital Window, Programme Level Meter and Stereo Scope are Trade Marks of Hamlet Video International Limited.

Hamlet products are Manufactured to ISO9001.2000 and ISO14001 specification.

Our most up to date information is available on our web site.

Copyright © 2006 Hamlet Video International

08/06

**Hamlet Video International Ltd**, Maple House, 11 Corinium Business Centre, Raans Road, Amersham, Bucks, HP6 6FB, England.

Tel: - +44 (0) 1494 729728 Fax: - +44 (0) 1494 723 237 Freephone (UK): - 0500 625525

E-mail: [sales@hamlet.co.uk](mailto:sales@hamlet.co.uk)

Website: [www.hamlet.co.uk](http://www.hamlet.co.uk)

**Hamlet Video International USA**, Tecads Inc, 26741 Portola Pkwy, Suite 1E, #601, Foothill Ranch, CA 92610-1763, U.S.A.

Tel: - +1 949-597-1053, Fax: - +1 949-597-1094 Toll Free: - 866-4-HAMLET

E-mail: [sales@hamlet.us.com](mailto:sales@hamlet.us.com)

Web site: [www.hamlet.us.com](http://www.hamlet.us.com)

**HAMLET**<sup>®</sup>  
EXCELLENCE IN VISION