



# Hamlet Video International Ltd

## Application Note

DS1

### Remote operation of Hamlet DigiScope DS9000 from a Personal Computer using USB.

Issue 1.1

20/01/08

## **Operation with a Personal Computer.**

The DS9000 can be operated from a personal computer using the supplied software  
Using the supplied software enables the PC to control the unit and has the following features:

- 1) The unit may be remotely controlled fully from the PC by using the mouse to click on command buttons.
- 2) The unit's video display (except picture) can be downloaded and displayed on the PC where it can be stored as a .BMP file to hard disk, recalled from disk or be sent to a printer etc.
- 3) It enables 'Real Time' error logging to take place where selected errors detected by the unit are sent to the PC and displayed in a table as they happen.
- 4) Selected errors detected by the unit and stored in its internal memory may be downloaded later and displayed as a table on the PC.

## **Required equipment**

Hamlet DigiScope DS9000

Hamlet HD-Scope software

USB cable

PC running Microsoft Windows XP or later

**To install the supplied software.**

PC requirement: A free USB connection, 5MB hard disk space, CD Rom drive, Windows XP or later.  
Insert Flexiscope CD Disk into CD drive.

The program will auto run

If not using 'My Computer' double click on the CD Rom icon then double click on the setup.exe icon.

Follow the onscreen instructions to complete the installation.

The software will be installed in the C:\Program Files \HD\_Scope folder.

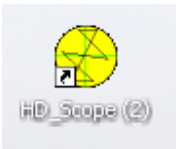
For ease of operation an icon for the DS9000 program short cut will be put onto the desktop, then just double click on this icon to run the application.

Drivers for the DS9000 are also located in this directory if the automatic hardware install does not find them.

Or a zip file downloaded from the internet

Unzip the compressed file into a location on your hard disc

Using 'My Computer' go to the directory the unzipped DS9000 files are then double click on the setup.exe icon. Follow the onscreen instructions to complete the installation.



For ease of operation an icon for the HD-Scope program short cut will be put onto the desktop, then just double click on this icon to run the application.

Drivers for the DS9000 are also located in this directory if the automatic hardware install does not find them



**Hardware Connection to the DS9000.**

Connect an USB cable from a USB port on the PC to the miniature USB connector on the DS9000.

## Operation

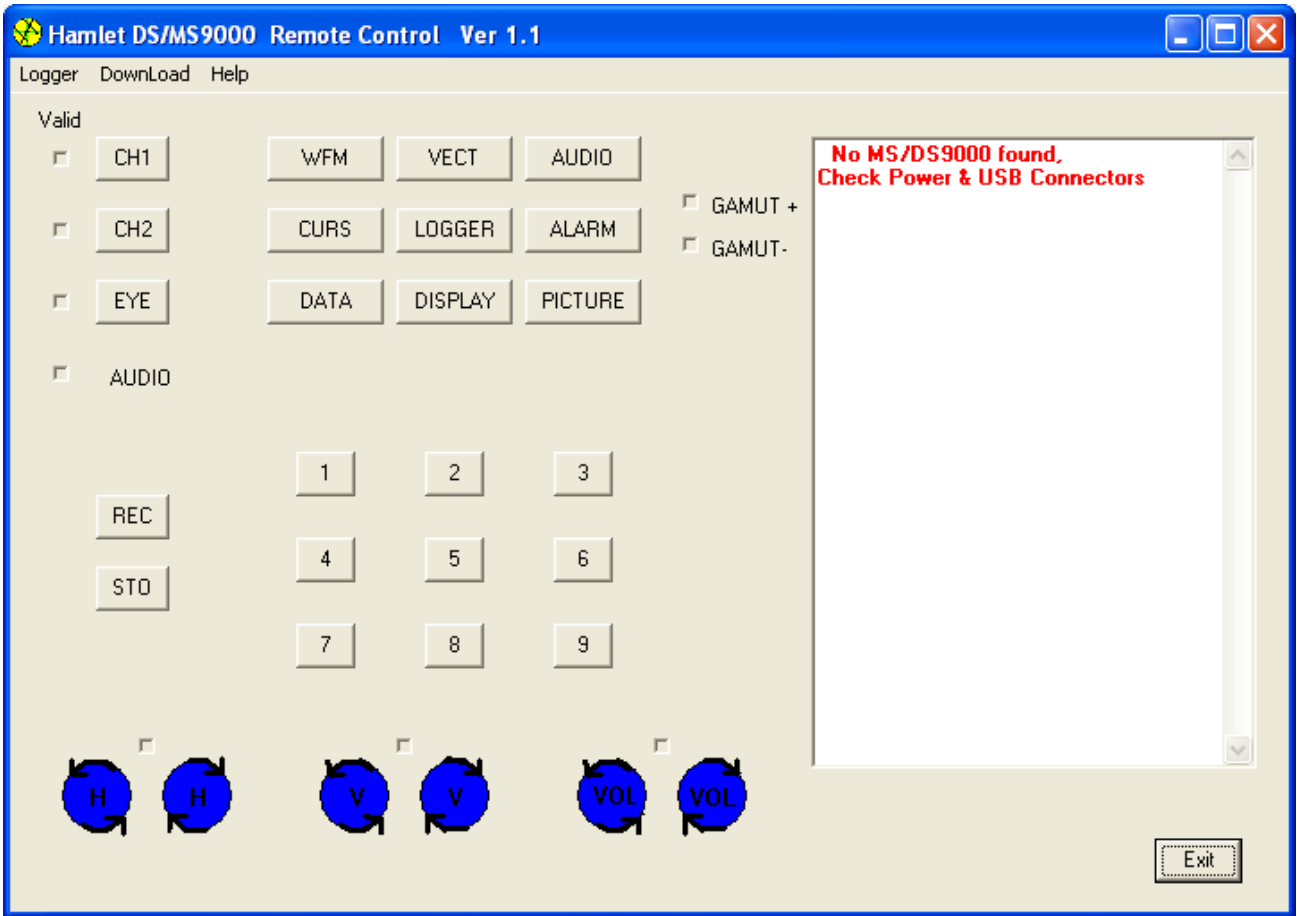


Fig 1 remote software main startup screen

When USB connection has been established the buttons and lights will reflect the current DS9000 settings.

Pressing a button on the remote software control panel will send commands to the DS9000 for the appropriate operation.

If rotary control adjustment is required the appropriate blue circle should be used on the control panel using the arrow selection for direction of rotation and then clicking the left mouse button.

## Downloading the DS9000 video display to the PC.

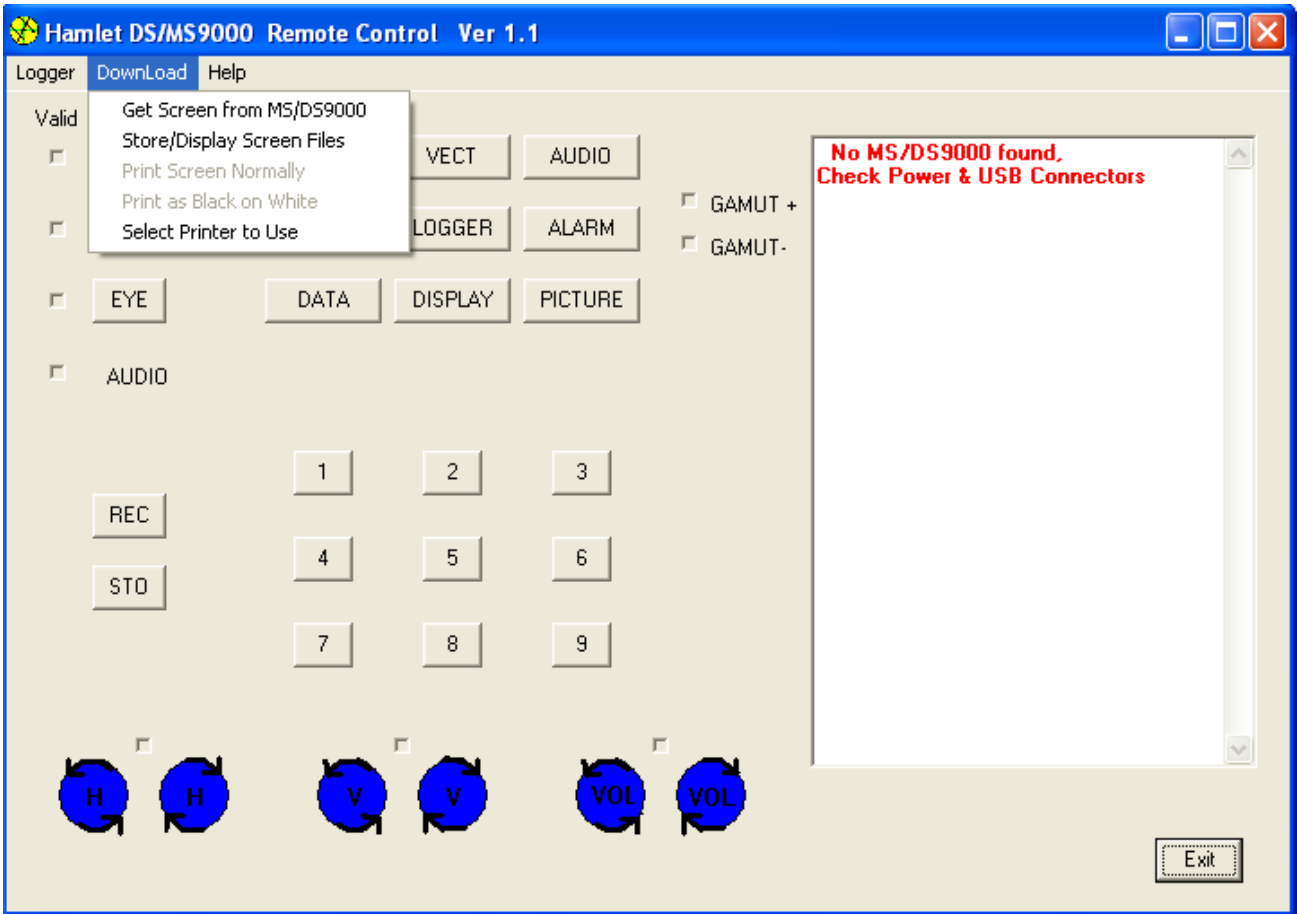


Fig 2 remote software showing the download menu

### Get Screen.

This menu item allows the currently displayed frame on the DS9000 to be downloaded to the PC. As well as the image being displayed the time, date, range and gain are appended to the bottom of the screen.

### Print Screen Normally

This menu item allows the current download frame (black background) to be printed on an installed printer.

### Print Screen Black on White

This menu item allows the current download frame (white background) to be printed on an installed printer .

### Printer Selection

This menu item allows the printer to be selected from the available installed printers.

### Store/Display Screen Files

This menu item allows the current download frame to be stored as a .bmp file using the store button and also to display previously stored frame captures using the display button. Use the cancel button to return to the remote control window.

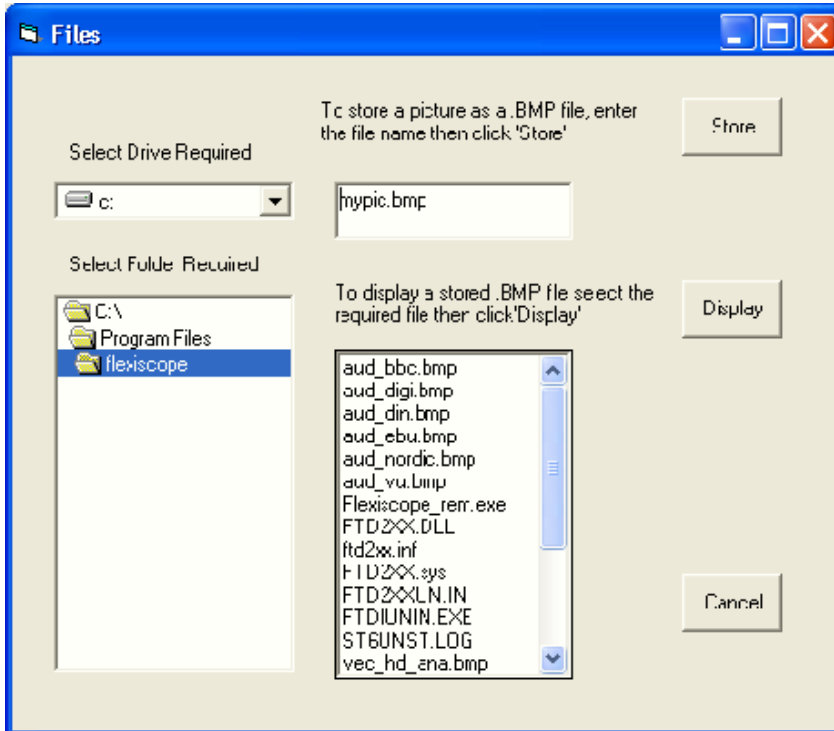


Fig 3 Frame storing and recall window

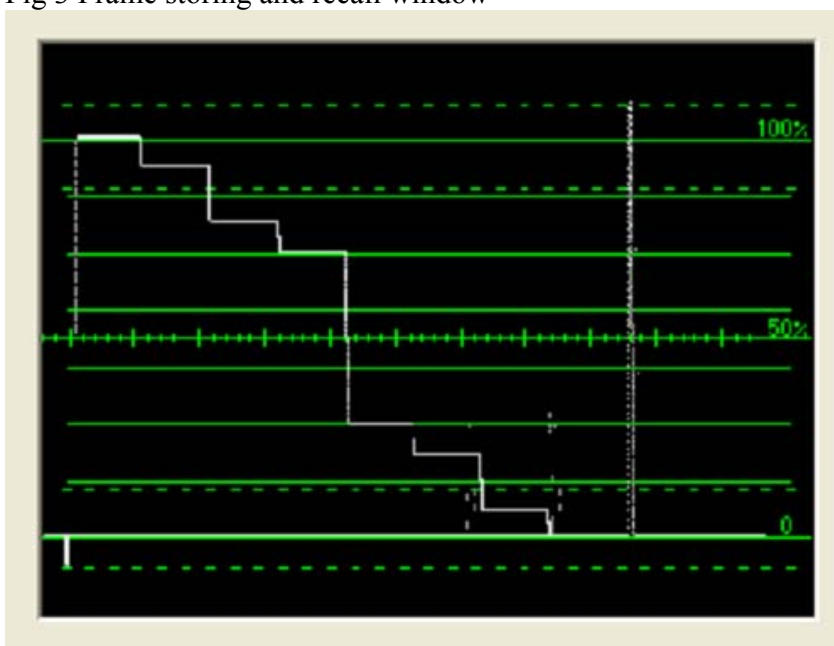


Fig 4 remote software example download

## Error log.

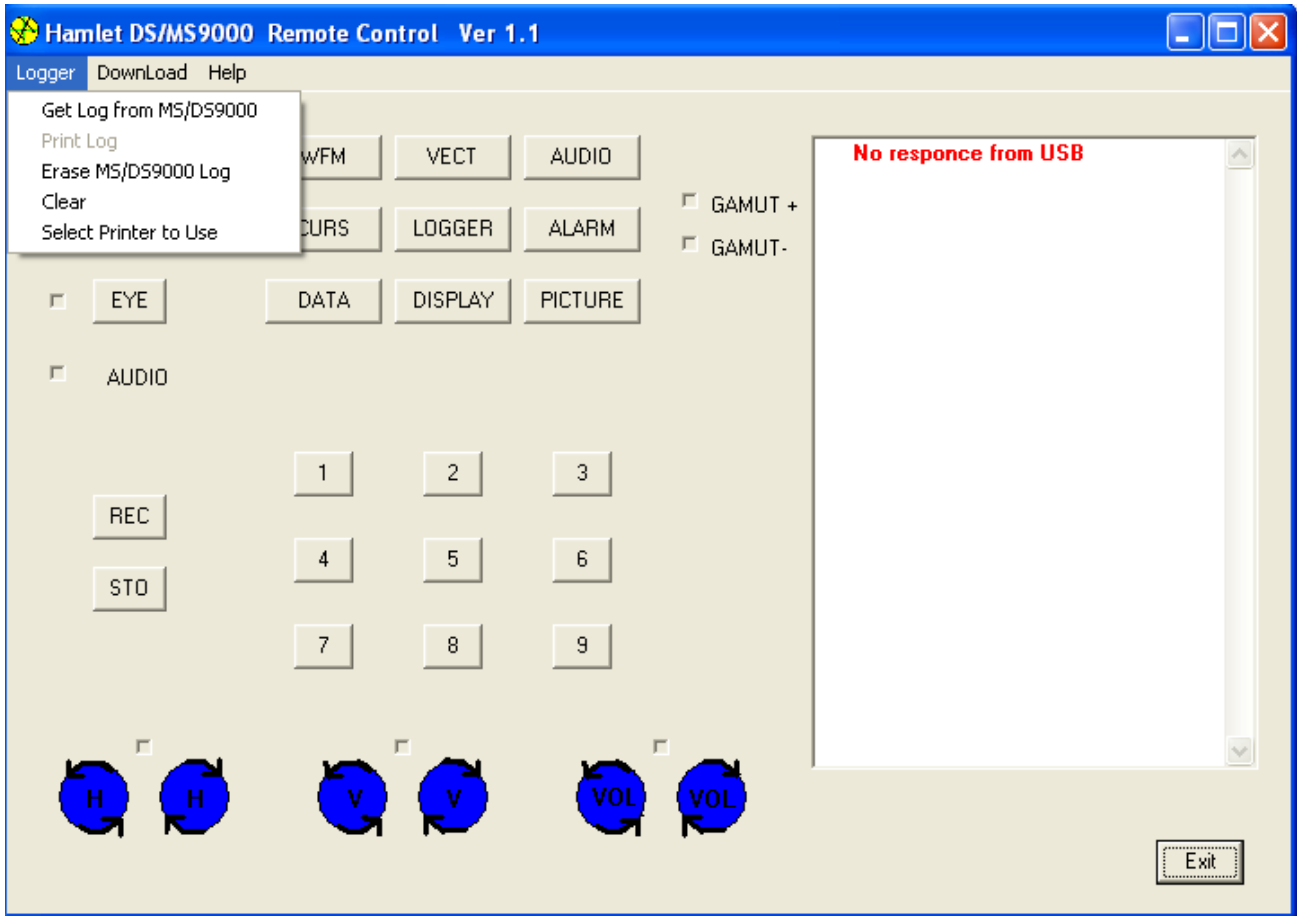


Fig 5 remote software logger download menu

### **Get Log.**

This menu item allows the currently log file on the DS9000 to be downloaded to the PC.

### **Print Log.**

This menu item allows the currently log file on the PC to be printed.

### **Erase Log.**

This menu item erases the current log file on the DS9000.

### **Clear.**

This menu item allows the displayed log file in the software control panel to be cleared..

### **Printer Selection**

This menu item allows the printer to be selected from the available installed printers.



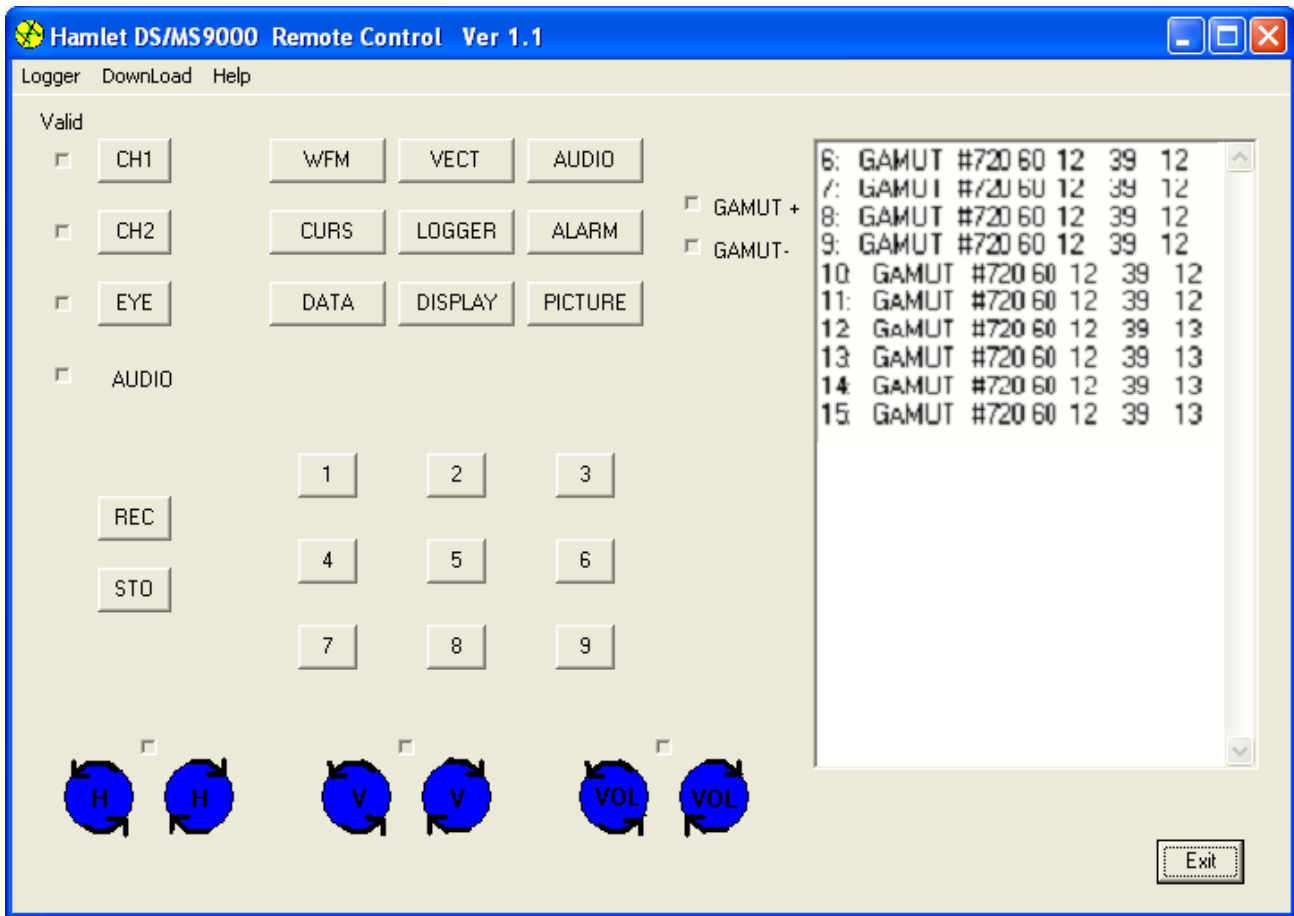


Fig 6 remote software logger download example.

## **APPENDIX A**

### **Trouble Shooting**

If the PC can't communicate with the DS9000 an Error message will appear in the application window. It is necessary to check that USB link is correctly setup.

- 1) Is the USB cable connected to PC?
- 2) Is the USB cable connected to DS9000?
- 3) Is the DS9000 powered up correctly?
- 4) Have the DS9000 drivers been installed on PC? If not or if a driver install request appears the drivers are in the C:\program files\HD-Scope directory.
- 5) Turn DS9000 off then on again to allow USB to recognize that the DS9000 is attached

## USEFUL WEBSITES

<b>HAMLET</b>	<b>www.hamlet.co.uk</b>	
<b>HAMLET (USA)</b>	<b>www.hamlet.us.com</b>	
<b>SMPTE</b>	<b>www.smppte.org</b>	<b>Society of Motion Picture Television Engineers</b>
<b>DIN</b>	<b>www.din.de</b>	<b>German Standards Institute</b>
<b>EBU</b>	<b>www.ebu.ch</b>	<b>European Broadcasting Union</b>
<b>AES</b>	<b>www.aes.org</b>	<b>Audio Engineering Society</b>
<b>ITU</b>	<b>www.itu.int</b>	<b>International Telecommunication Union</b>

## CONTACT DETAILS AND CUSTOMER SUPPORT

For any form of assistance in maintaining your DigiScope, please contact:

Hamlet Video International Limited  
Maple House 11 Corinium Business Centre Raans Road Amersham Bucks HP6 6FB England  
Main Line: +44 (0)1494 729 728  
Fax Line: +44 (0)1494 723 237  
Free phone (UK) 0500 625 525  
E-mail: sales@hamlet.co.uk  
Web site: www.hamlet.co.uk

Hamlet Video International USA service center , Tecads Inc, 23 Del Padre St, Foothill Ranch,  
CA 92610, U.S.A.  
Tel: +1 (949) 597 1053,  
Fax: +1 (949) 597 1094.  
Toll Free Tel number: (866) 4 HAMLET  
E-mail: service@hamlet.us.com  
Web site: www.hamlet.us.com

In correspondence concerning this instrument, please quote the serial number, which you will find printed on the label at the back of the unit.