



# Hamlet Video International Ltd

## Application Note

MF1

### Remote operation of Hamlet MicroFlex from a Personal Computer using USB.

Issue 1.1

20/01/08

## **Operation with a Personal Computer.**

The MicroFlex can be operated from a personal computer using the supplied software. Using the supplied software enables the PC to control the unit and has the following features:

- 1) The unit may be remotely controlled fully from the PC by using the mouse to click on command buttons.
- 2) The unit's video display (except picture) can be downloaded and displayed on the PC where it can be stored as a .BMP file to hard disk, recalled from disk or be sent to a printer etc.
- 3) It enables 'Real Time' error logging to take place where selected errors detected by the unit are sent to the PC and displayed in a table as they happen.
- 4) Selected errors detected by the unit and stored in its internal memory may be downloaded later and displayed as a table on the PC.

## **Required equipment**

Hamlet MicroFlex

Hamlet MicroFlex software

USB cable (supplied with MicroFlex)

PC running Microsoft Windows XP or later

**To install the supplied software.**

PC requirement: A free USB connection, 5MB hard disk space, CD Rom drive, Windows XP or later.

Insert Flexiscope CD Disk into CD drive.

The program will auto run

If not using 'My Computer' double click on the CD Rom icon then double click on the setup.exe icon.

Follow the onscreen instructions to complete the installation.

The software will be installed in the C:\Program Files microflex folder.

For ease of operation an icon for the MicroFlex program short cut will be put onto the desktop, then just double click on this icon to run the application.

Drivers for the MicroFlex are also located in this directory if the automatic hardware install does not find them.

Or a zip file downloaded from the internet

Unzip the compressed file into a location on your hard disc

Using 'My Computer' go to the directory the unzipped MicroFlex files are then double click on the setup.exe icon. Follow the onscreen instructions to complete the installation.



For ease of operation an icon for the MicroFlex program short cut will be put onto the desktop, then just double click on this icon to run the application.

Drivers for the Flexiscope are also located in this directory if the automatic hardware install does not find them



**Hardware Connection to the MicroFlex.**

Connect an USB cable (supplied) from a USB port on the PC to the miniature USB connector on the MicroFlex.

# Operation

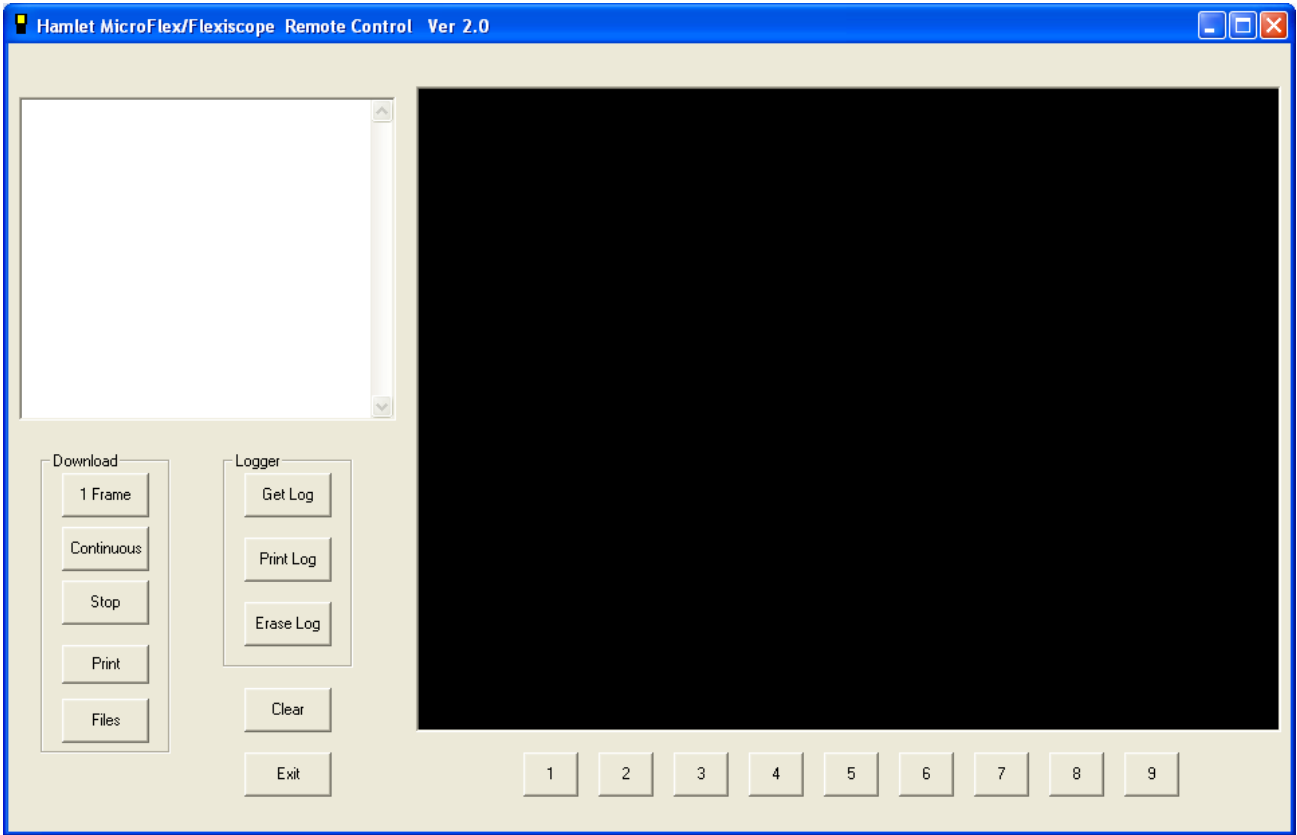


Fig 1 remote software main startup screen

When USB connection has been established the buttons 1 – 9 will operate the corresponding buttons on the front of the MicroFlex

## Downloading the MicroFlex video display to the PC.

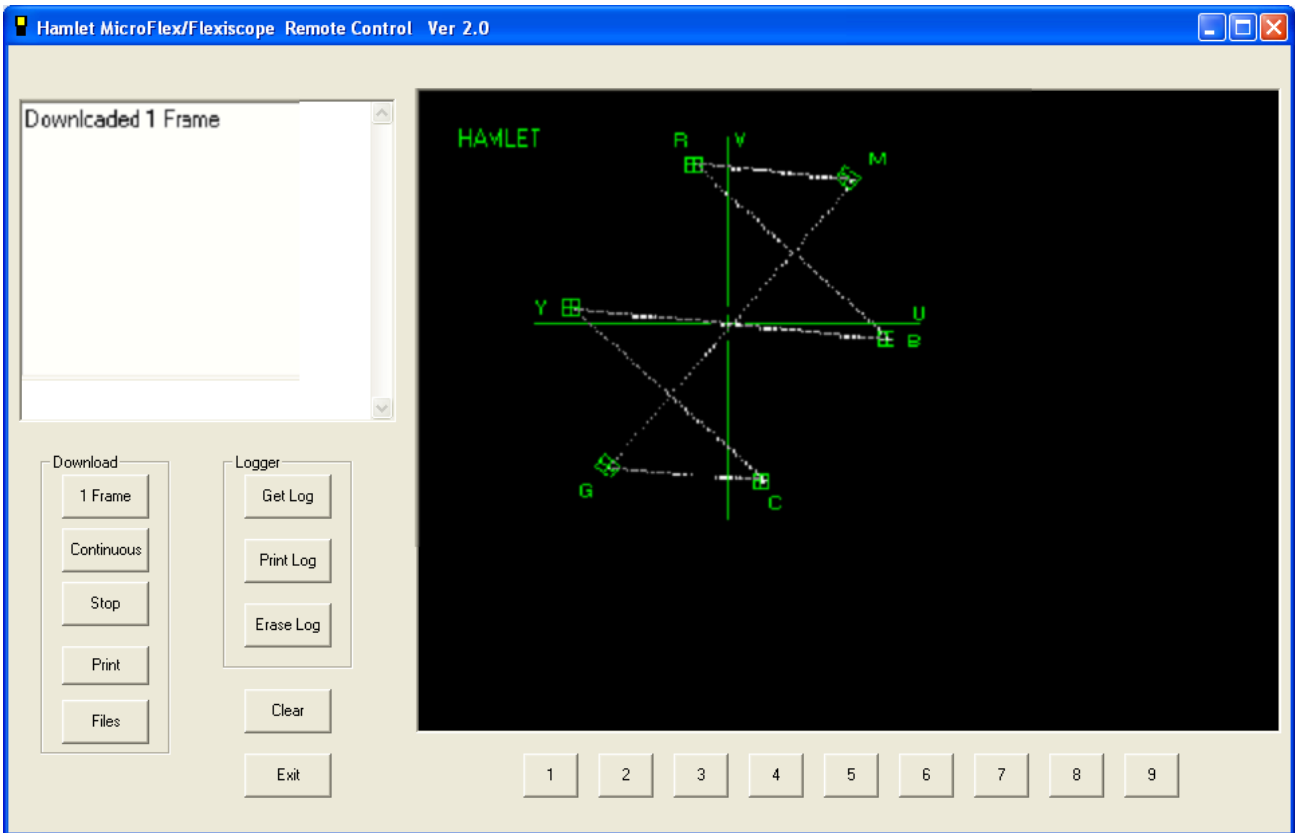


Fig 2 remote software download screen

### **Download 1 Frame.**

This button will download to the PC the current display on the unit, the time taken will depend on the baud rate and the complexity of the image.

As well as the image being displayed the time, date, range and gain are appended to the bottom of the screen.

### **Continuous Download.**

This button will download to the PC the current display on the unit as the previous button, but will repeat continuously at a rate dependant on the baud rate until the

**Stop Download button is pressed.**

### **Files**

This button allows the current download frame to be stored as a .bmp file using the store button and also to display previously stored frame captures using the display button. Use the cancel button to return to the remote control window.

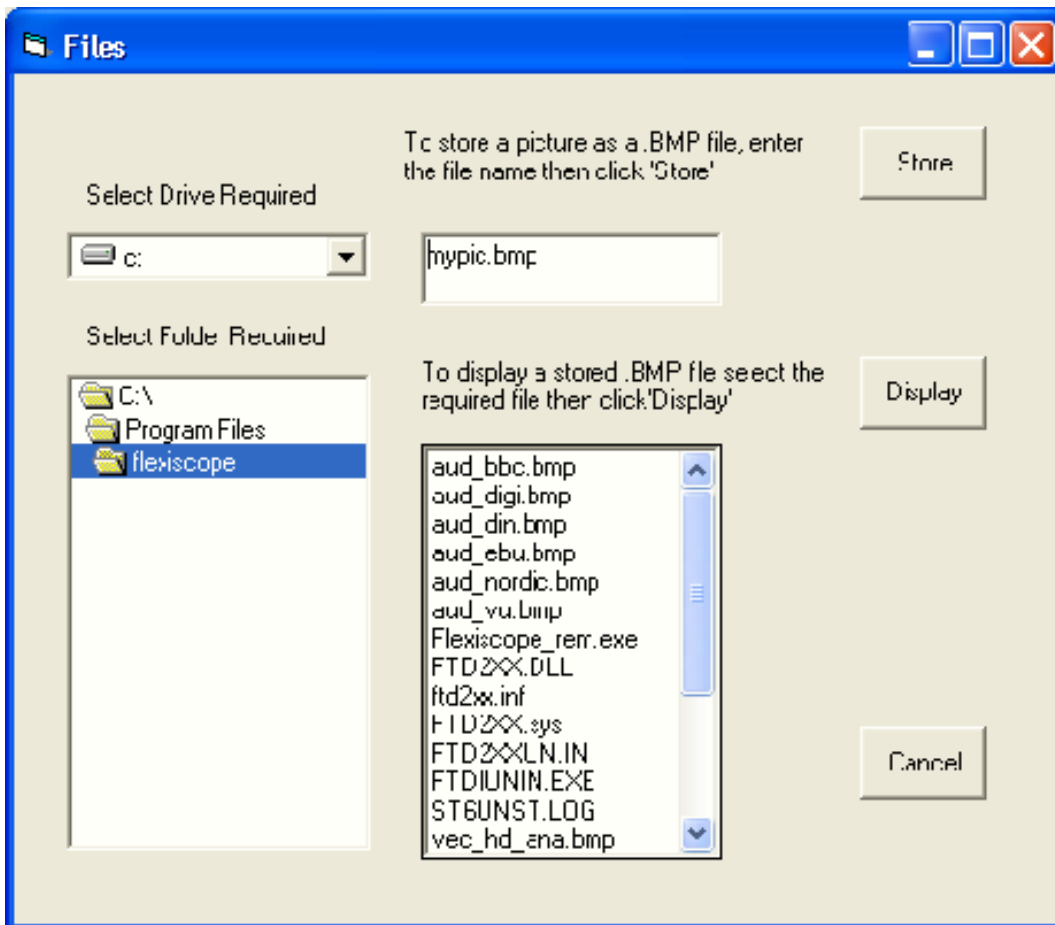


Fig 3 Frame capture and recall window

## Error log.

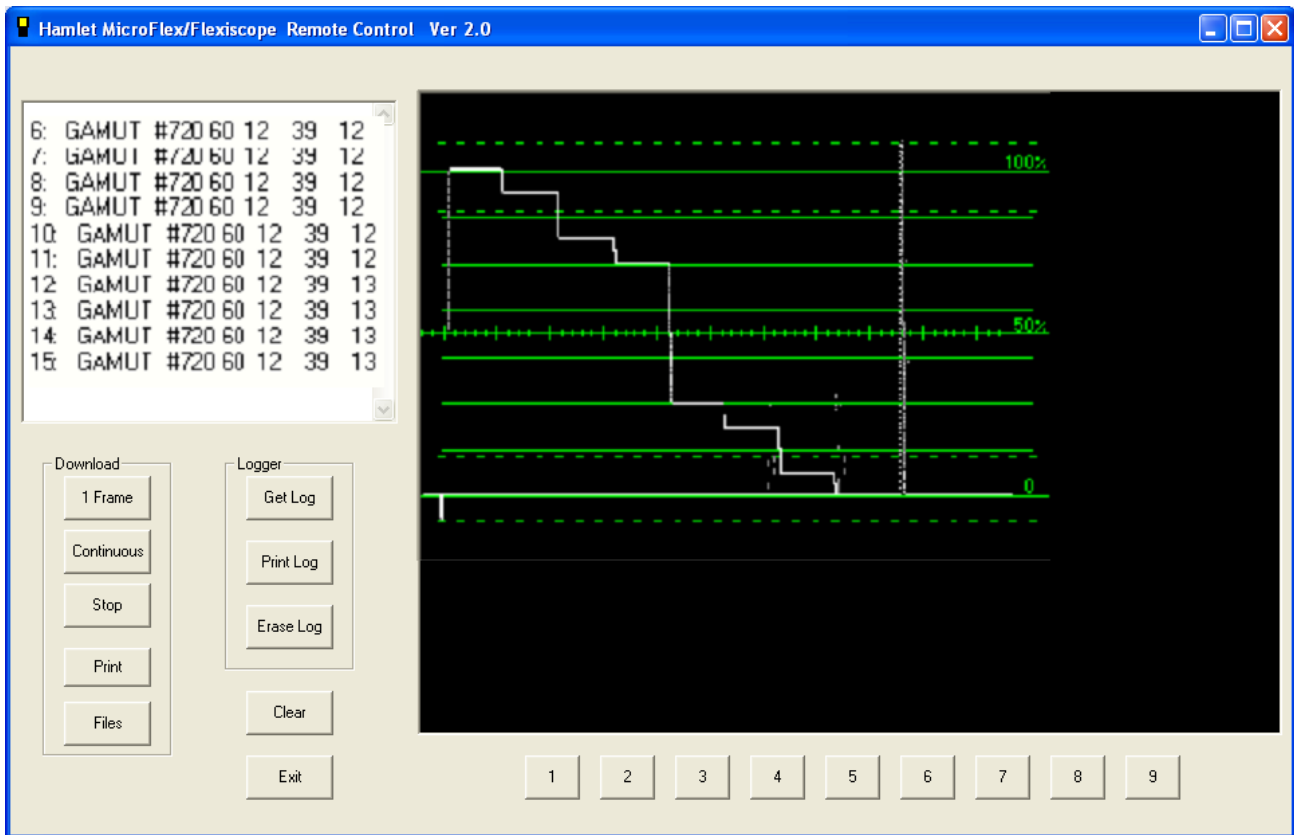


Fig 4 remote software logger screen

### Get Log

Allows the current log file in the MicroFlex to be downloaded and viewed.

### Print Log

Allows the contents of the error log file that has been downloaded from the MicroFlex to be printed to the Windows default printer.

### Erase Log

Erases the current log file in the MicroFlex



## **APPENDIX A**

### **Trouble Shooting**

If the PC can't communicate with the MicroFlex an Error message will appear in the application window. It is necessary to check that USB link is correctly setup.

- 1) Is the USB cable connected to PC?
- 2) Is the USB cable connected to MicroFlex?
- 3) Is the MicroFlex powered up correctly?
- 4) Have the MicroFlex drivers been installed on PC? If not or if a driver install request appears the drivers are in the C:\program files\ MicroFlex directory.
- 5) Turn MicroFlex off then on again to allow USB to recognize that the MicroFlex is attached

## USEFUL WEBSITES

<b>HAMLET</b>	<b>www.hamlet.co.uk</b>	
<b>HAMLET (USA)</b>	<b>www.hamlet.us.com</b>	
<b>SMPTE</b>	<b>www.smppte.org</b>	<b>Society of Motion Picture Television Engineers</b>
<b>DIN</b>	<b>www.din.de</b>	<b>German Standards Institute</b>
<b>EBU</b>	<b>www.ebu.ch</b>	<b>European Broadcasting Union</b>
<b>AES</b>	<b>www.aes.org</b>	<b>Audio Engineering Society</b>
<b>ITU</b>	<b>www.itu.int</b>	<b>International Telecommunication Union</b>

## CONTACT DETAILS AND CUSTOMER SUPPORT

For any form of assistance in maintaining your MicroFlex, please contact:

Hamlet Video International Limited  
Maple House 11 Corinium Business Centre Raans Road Amersham Bucks HP6 6FB England  
Main Line: +44 (0)1494 729 728  
Fax Line: +44 (0)1494 723 237  
Free phone (UK) 0500 625 525  
E-mail: [sales@hamlet.co.uk](mailto:sales@hamlet.co.uk)  
Web site: [www.hamlet.co.uk](http://www.hamlet.co.uk)

Hamlet Video International USA service center , Tecads Inc, 23 Del Padre St, Foothill Ranch,  
CA 92610, U.S.A.  
Tel: +1 (949) 597 1053,  
Fax: +1 (949) 597 1094.  
Toll Free Tel number: (866) 4 HAMLET  
E-mail: [service@hamlet.us.com](mailto:service@hamlet.us.com)  
Web site: [www.hamlet.us.com](http://www.hamlet.us.com)

In correspondence concerning this instrument, please quote the serial number, which you will find printed on the label at the back of the unit.