



# Hamlet Video International Ltd

## Application Note

MF2

### Remote operation of Hamlet Flexiscope from a Personal Computer using a Network.

Issue 1.1

20/01/08

## **Operation with a Personal Computer over a network.**

The MicroFlex can be operated from a personal computer using the supplied software. Using the supplied software enables the PC to control the unit and has the following features:

- 1) The unit may be remotely controlled fully from the PC by using the mouse to click on command buttons.
- 2) The unit's video display (except picture) can be downloaded and displayed on the PC where it can be stored as a .BMP file to hard disk, recalled from disk or be sent to a printer etc.
- 3) It enables 'Real Time' error logging to take place where selected errors detected by the unit are sent to the PC and displayed in a table as they happen.
- 4) Selected errors detected by the unit and stored in its internal memory may be downloaded later and displayed as a table on the PC.

See application note MF1 for instructions how to connect the MicroFlex to the PC using the USB interface.

The MicroFlex should be connected to the PC using the USB initially to make sure operation of the software, PC and MicroFlex works correctly.

**Required equipment**

Hamlet MicroFlex

Hamlet MicroFlex software

USB cable

PC running Microsoft Windows XP or later

Network cable

USB to IP converter hardware

(Hamlet has verified AnywhereUSB I/O Remote Concentrator available from Inside Outnetworks, [www.ionetworks.com](http://www.ionetworks.com) operates USB devices over an IP network)



### Example Network layout

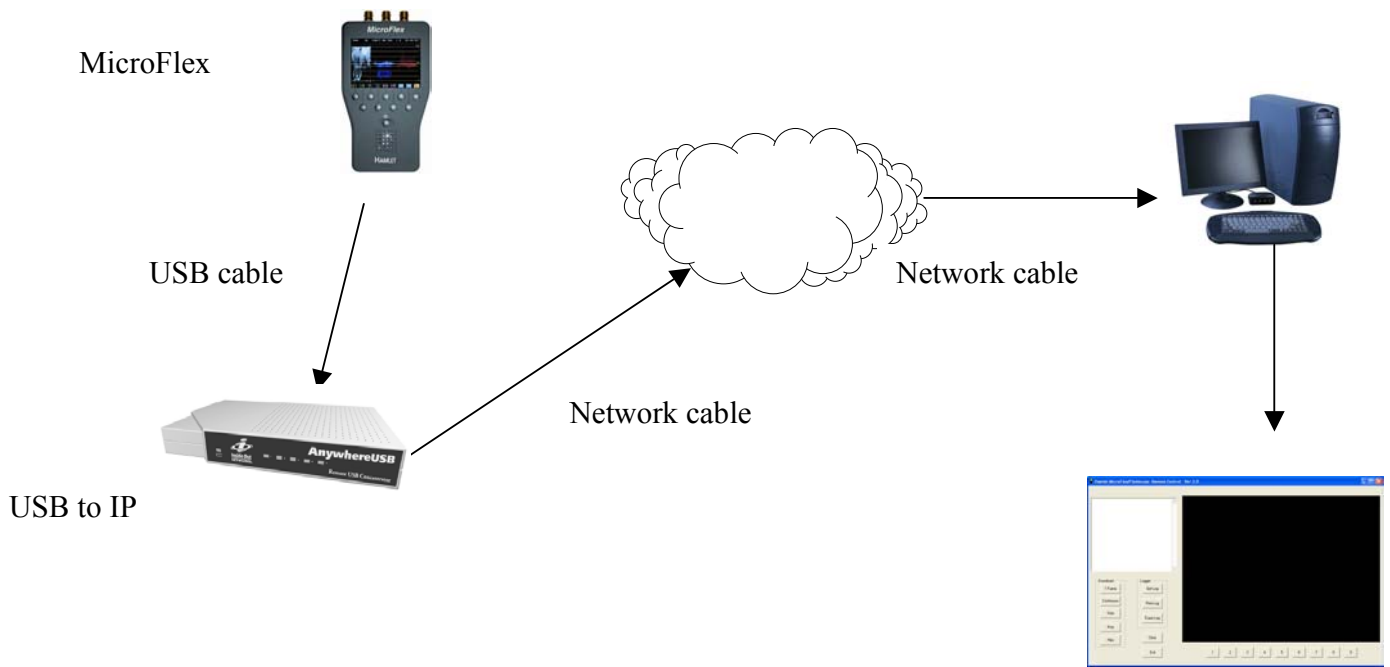


Fig 1 Example network layout

## Installation

1) Connect PC to network

2) Check MicroFlex operation by directly connecting MicroFlex to PC by supplied USB cable and operate the installed MicroFlex software.

3) Install the USB to IP converter.

In this Application note the Ionetworks AnywhereUSB will be used  
Connect the AnywhereUSB to the network

4) Install on the remote PC which will be running the MicroFlex software the AnywhereUSB drivers and configure routine. (Refer to converter box manual for more information on its setup an IP address is required)

The lights on the AnywhereUSB should stop scanning if not update the drivers from Ionetworks web site.

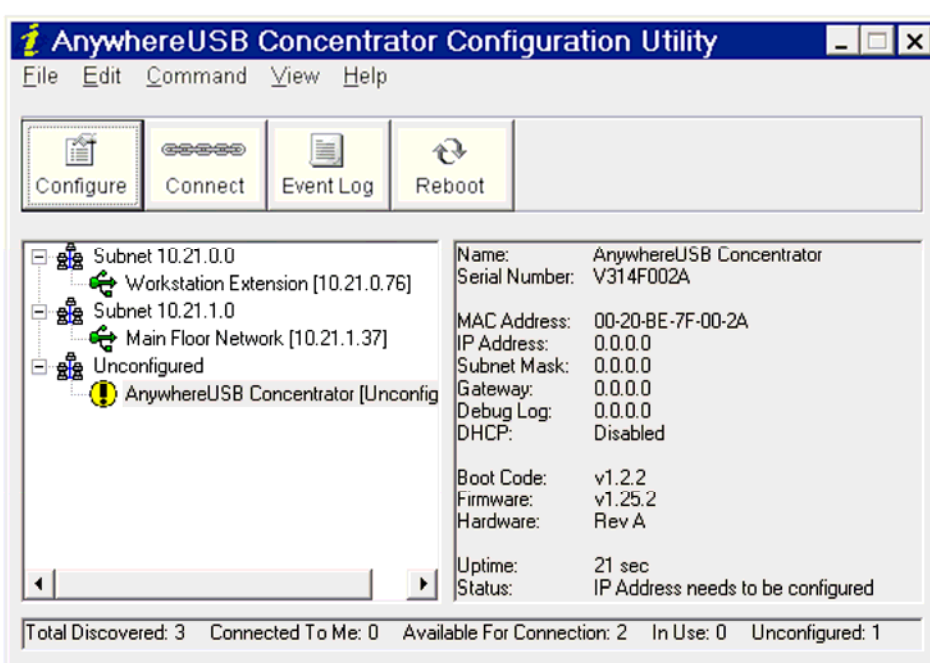


Fig 2 AnywhereUSB configure screen

5) Select the AnywhereUSB hub where the MicroFlex you require will be connected, from the available units in the configure software and then use the connect button to enable the communication between the PC and the MicroFlex.

- 6) Connect MicroFlex to AnywhereUSB using supplied USB cable
- 7) Turn MicroFlex on.
- 8) Start the MicroFlex software

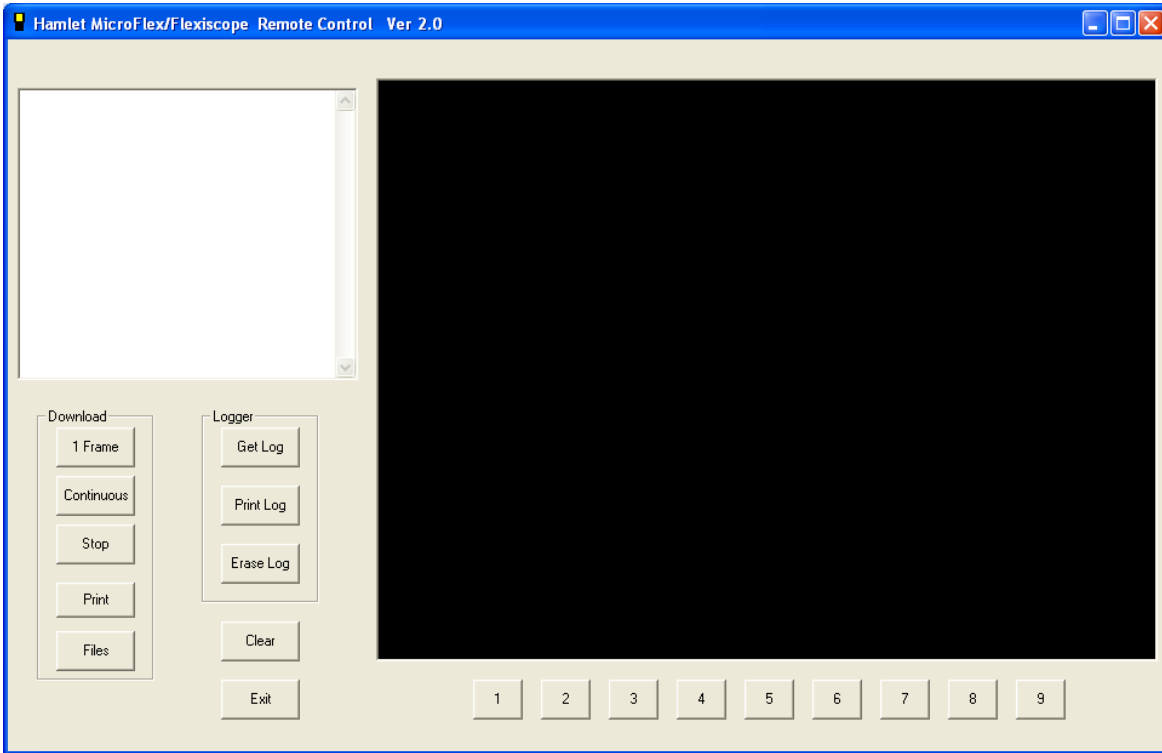


Fig 3 MicroFlex Remote control software screen

## **APPENDIX A**

### **Trouble Shooting**

If the PC can't communicate with the MicroFlex an Error message will appear in the application window. It is necessary to check that USB link is correctly setup.

- 1) Is the USB cable connected to the USB to IP converter?
- 2) Is the USB cable connected to MicroFlex?
- 3) Is the MicroFlex powered up correctly?
- 4) Have the MicroFlex drivers been installed on PC? If not or if a driver install request appears the drivers are in the C:\program files\ MicroFlex directory.
- 5) Turn MicroFlex off then on again to allow USB to recognize that the MicroFlex is attached
- 6) Are the AnywhereUSB lights static if not update the AnywhereUSB drivers

## USEFUL WEBSITES

<b>HAMLET</b>	<b>www.hamlet.co.uk</b>	
<b>HAMLET (USA)</b>	<b>www.hamlet.us.com</b>	
<b>SMPTE</b>	<b>www.smppte.org</b>	<b>Society of Motion Picture Television Engineers</b>
<b>DIN</b>	<b>www.din.de</b>	<b>German Standards Institute</b>
<b>EBU</b>	<b>www.ebu.ch</b>	<b>European Broadcasting Union</b>
<b>AES</b>	<b>www.aes.org</b>	<b>Audio Engineering Society</b>
<b>ITU</b>	<b>www.itu.int</b>	<b>International Telecommunication Union</b>

## CONTACT DETAILS AND CUSTOMER SUPPORT

For any form of assistance in maintaining your MicroFlex, please contact:

Hamlet Video International Limited  
Maple House 11 Corinium Business Centre Raans Road Amersham Bucks HP6 6FB England  
Main Line: +44 (0)1494 729 728  
Fax Line: +44 (0)1494 723 237  
Free phone (UK) 0500 625 525  
E-mail: [sales@hamlet.co.uk](mailto:sales@hamlet.co.uk)  
Web site: [www.hamlet.co.uk](http://www.hamlet.co.uk)

Hamlet Video International USA service center , Tecads Inc, 23 Del Padre St, Foothill Ranch,  
CA 92610, U.S.A.  
Tel: +1 (949) 597 1053,  
Fax: +1 (949) 597 1094.  
Toll Free Tel number: (866) 4 HAMLET  
E-mail: [service@hamlet.us.com](mailto:service@hamlet.us.com)  
Web site: [www.hamlet.us.com](http://www.hamlet.us.com)

In correspondence concerning this instrument, please quote the serial number, which you will find printed on the label at the back of the unit.