



Hamlet Video International Ltd

Application Note

MS9000-2

Remote operation of Hamlet MonitorScope MS9000 from a Personal Computer using a Network.

Issue 1.1

20/01/08

Operation of the MonitorScope MS9000 with a Personal Computer over a network

The MonitorScope MS9000 can be operated from a personal computer using the supplied software. Using the supplied software enables the PC to control the unit and has the following features:

- 1) The unit may be remotely controlled fully from the PC by using the mouse to click on command buttons.
- 2) The unit's video display (except picture) can be downloaded and displayed on the PC where it can be stored as a .BMP file to hard disk, recalled from disk or be sent to a printer etc.
- 3) It enables 'Real Time' error logging to take place where selected errors detected by the unit are sent to the PC and displayed in a table as they happen.
- 4) Selected errors detected by the unit and stored in its internal memory may be downloaded later and displayed as a table on the PC.

See application note MS9000-1 for instructions how to connect the MonitorScope MS9000 to the PC using the USB interface.

The MonitorScope MS9000 should be connected to the PC using the USB initially to make sure operation of the software, PC and MonitorScope MS9000 works correctly.

Required equipment

Hamlet MonitorScope MS9000

Hamlet HD-Scope software

USB cable

PC running Microsoft Windows XP or later

Network cable

USB to IP converter hardware

(Hamlet has verified AnywhereUSB I/O Remote Concentrator available from Inside Outnetworks, www.ionetworks.com operates USB devices over an IP network)



Example Network layout

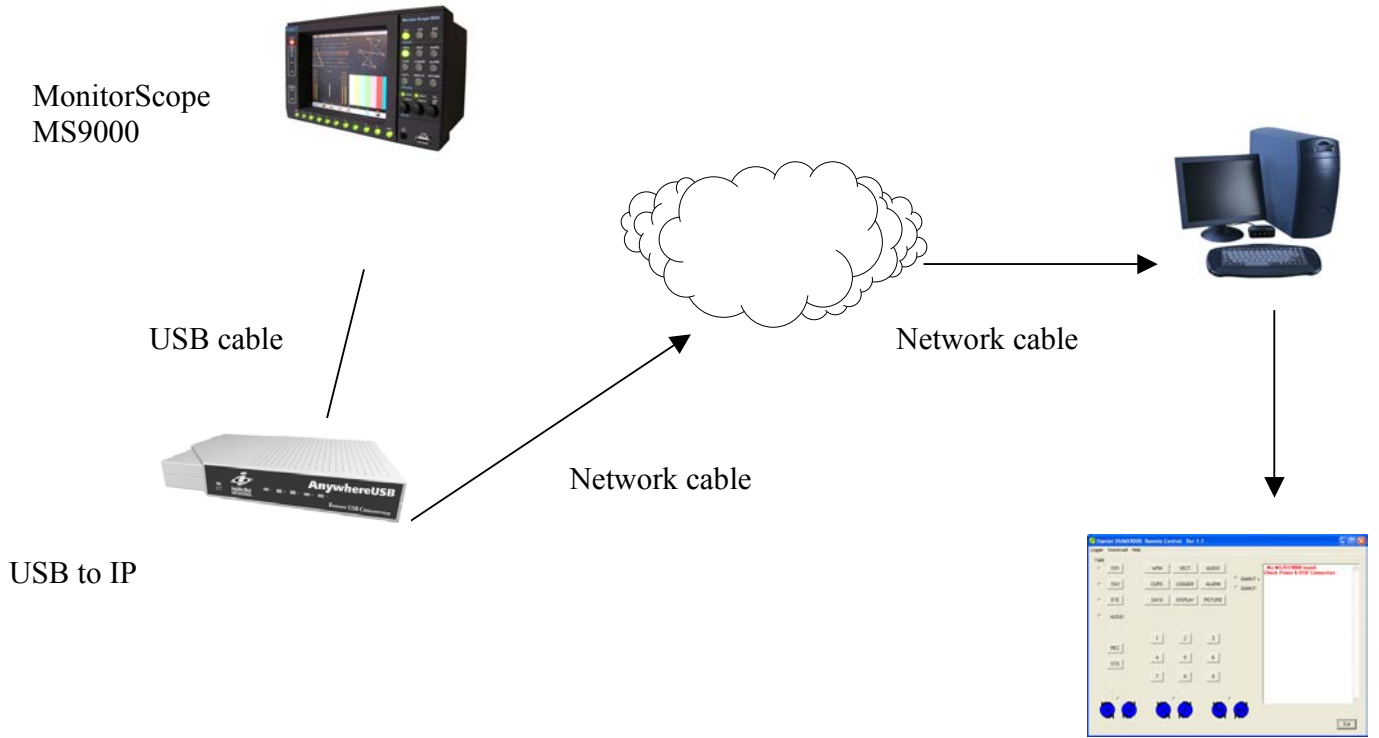


Fig 1 Example network layout

Installation

1) Connect PC to network

2) Check MonitorScope MS9000 operation by directly connecting MonitorScope MS9000 to PC by supplied USB cable and operate the installed HD-Scope software.

3) Install the USB to IP converter.

In this Application note the Ionetworks AnywhereUSB will be used
Connect the AnywhereUSB to the network

4) Install on the remote PC which will be running the HD-Scope software the AnywhereUSB drivers and configure routine. (Refer to converter box manual for more information on its setup an IP address is required)

The lights on the AnywhereUSB should stop scanning if not update the drivers from Ionetworks web site.

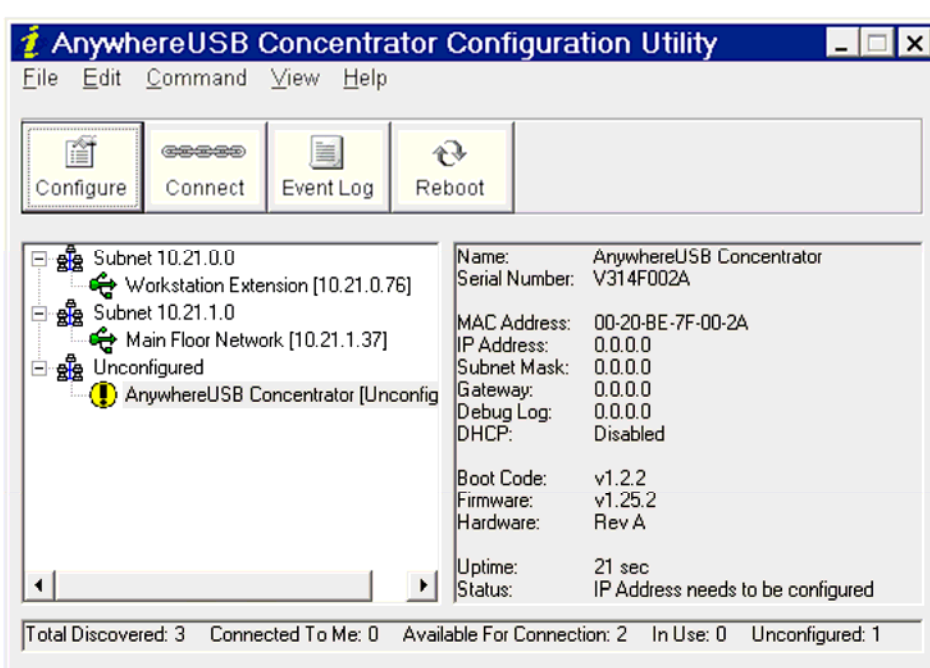


Fig 2 AnywhereUSB configure screen

5) Select the AnywhereUSB hub where the MonitorScope MS9000 you require will be connected, from the available units in the configure software and then use the connect button to enable the communication between the PC and the MonitorScope MS9000.

- 6) Connect MonitorScope MS9000 to AnywhereUSB using supplied USB cable
- 7) Turn MonitorScope MS9000 on.
- 8) Start the HD-Scope software

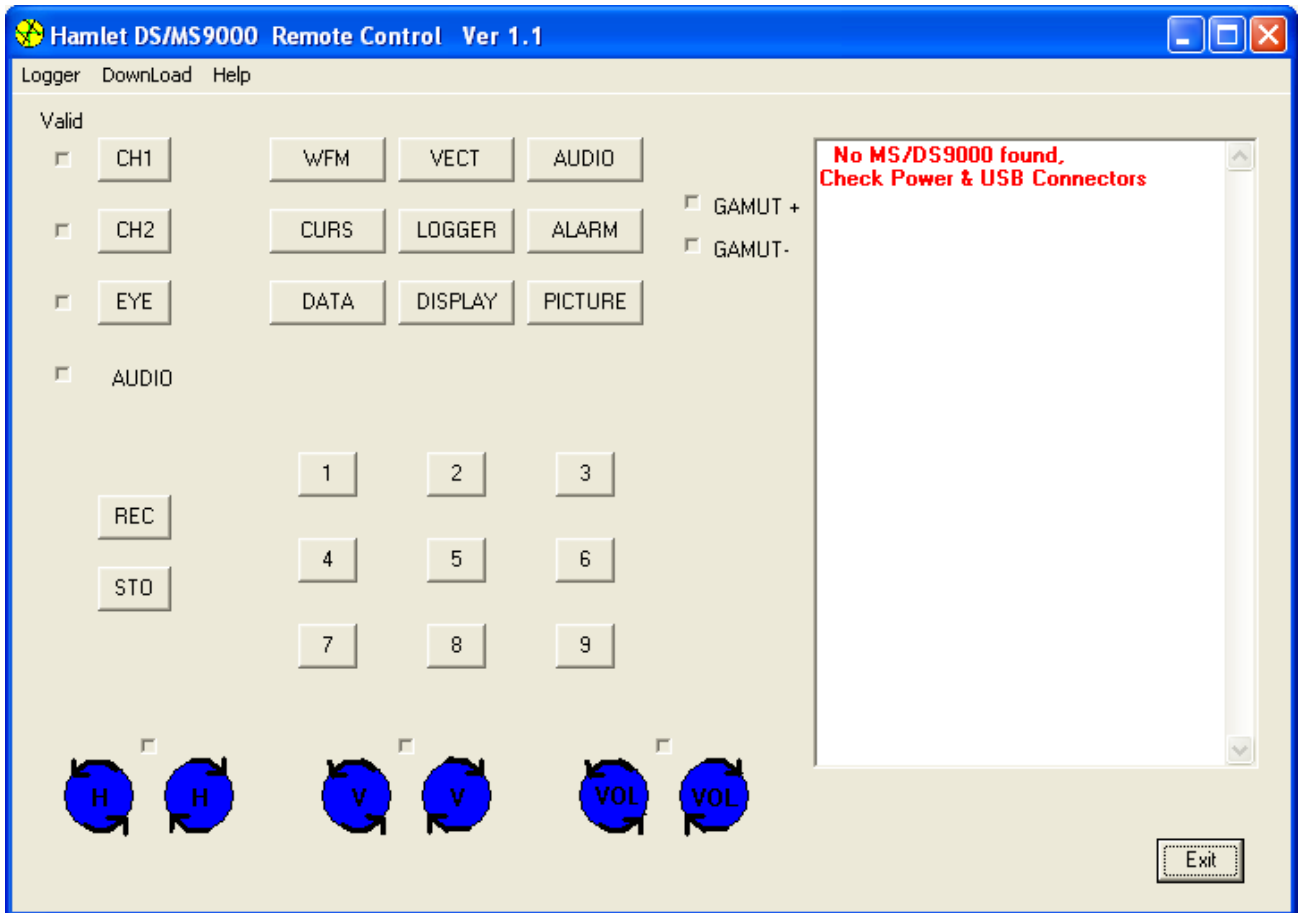


Fig 3 MonitorScope MS9000 Remote control software screen

APPENDIX A

Trouble Shooting

If the PC can't communicate with the MonitorScope MS9000 an Error message will appear in the application window. It is necessary to check that USB link is correctly setup.

- 1) Is the USB cable connected to the USB to IP converter?
- 2) Is the USB cable connected to MonitorScope MS9000?
- 3) Is the MonitorScope MS9000 powered up correctly?
- 4) Have the MonitorScope MS9000 drivers been installed on PC? If not or if a driver install request appears the drivers are in the C:\program files HD-Scope directory.
- 5) Turn MonitorScope MS9000 off then on again to allow USB to recognize that the MonitorScope MS9000 is attached
- 6) Are the AnywhereUSB lights static if not update the AnywhereUSB drivers

USEFUL WEBSITES

HAMLET	www.hamlet.co.uk	
HAMLET (USA)	www.hamlet.us.com	
SMPTE	www.smpte.org	Society of Motion Picture Television Engineers
DIN	www.din.de	German Standards Institute
EBU	www.ebu.ch	European Broadcasting Union
AES	www.aes.org	Audio Engineering Society
ITU	www.itu.int	International Telecommunication Union
IONetworks	www.ionetworks.com	Anywhere USB

CONTACT DETAILS AND CUSTOMER SUPPORT

For any form of assistance in maintaining your MonitorScope MS9000, please contact:

Hamlet Video International Limited
Maple House 11 Corinium Business Centre Raans Road Amersham Bucks HP6 6FB England
Main Line: +44 (0)1494 729 728
Fax Line: +44 (0)1494 723 237
Free phone (UK) 0500 625 525
E-mail: sales@hamlet.co.uk Web site: www.hamlet.co.uk

Hamlet Video International USA service center , Tecads Inc, 23 Del Padre St, Foothill Ranch,
CA 92610, U.S.A.
Tel: +1 (949) 597 1053,
Fax: +1 (949) 597 1094.
Toll Free Tel number: (866) 4 HAMLET
E-mail: service@hamlet.us.com Web site: www.hamlet.us.com

In correspondence concerning this instrument, please quote the serial number, which you will find printed on the label at the back of the unit.