



# Hamlet Video International Ltd

## Application Note

MS2

### Remote operation of Hamlet Monitor Scope from a Personal Computer using a Network.

Issue 1.1

28/11/05

## **Operation of the Monitor Scope with a Personal Computer over a network**

The Monitor Scope can be operated from a personal computer using the supplied software. Using the supplied software enables the PC to control the unit and has the following features:

- 1) The unit may be remotely controlled fully from the PC by using the mouse to click on command buttons.
- 2) The unit's video display (except picture) can be downloaded and displayed on the PC where it can be stored as a .BMP file to hard disk, recalled from disk or be sent to a printer etc.
- 3) It enables 'Real Time' error logging to take place where selected errors detected by the unit are sent to the PC and displayed in a table as they happen.
- 4) Selected errors detected by the unit and stored in its internal memory may be downloaded later and displayed as a table on the PC.

See application note MS1 for instructions how to connect the Monitor Scope to the PC using the RS232 interface.

The Monitor Scope should be connected to the PC using the RS232 initially to make sure operation of the software, PC and Monitor Scope works correctly.

### **Required equipment**

Hamlet Monitor Scope

Hamlet Monitor Scope software

RS232 cable

PC running Microsoft Windows XP or later

Network cable

USB to IP converter hardware

(Hamlet has verified AnywhereUSB I/O Remote Concentrator available from Inside Outnetworks, [www.ionetworks.com](http://www.ionetworks.com) operates USB devices over an IP network)



USB to RS-232 Adapter

(Hamlet has verified UC-232A USB to RS-232 Adapter available from Aten International, [www.aten.com](http://www.aten.com) operates RS232 devices over USB)



### Example Network layout

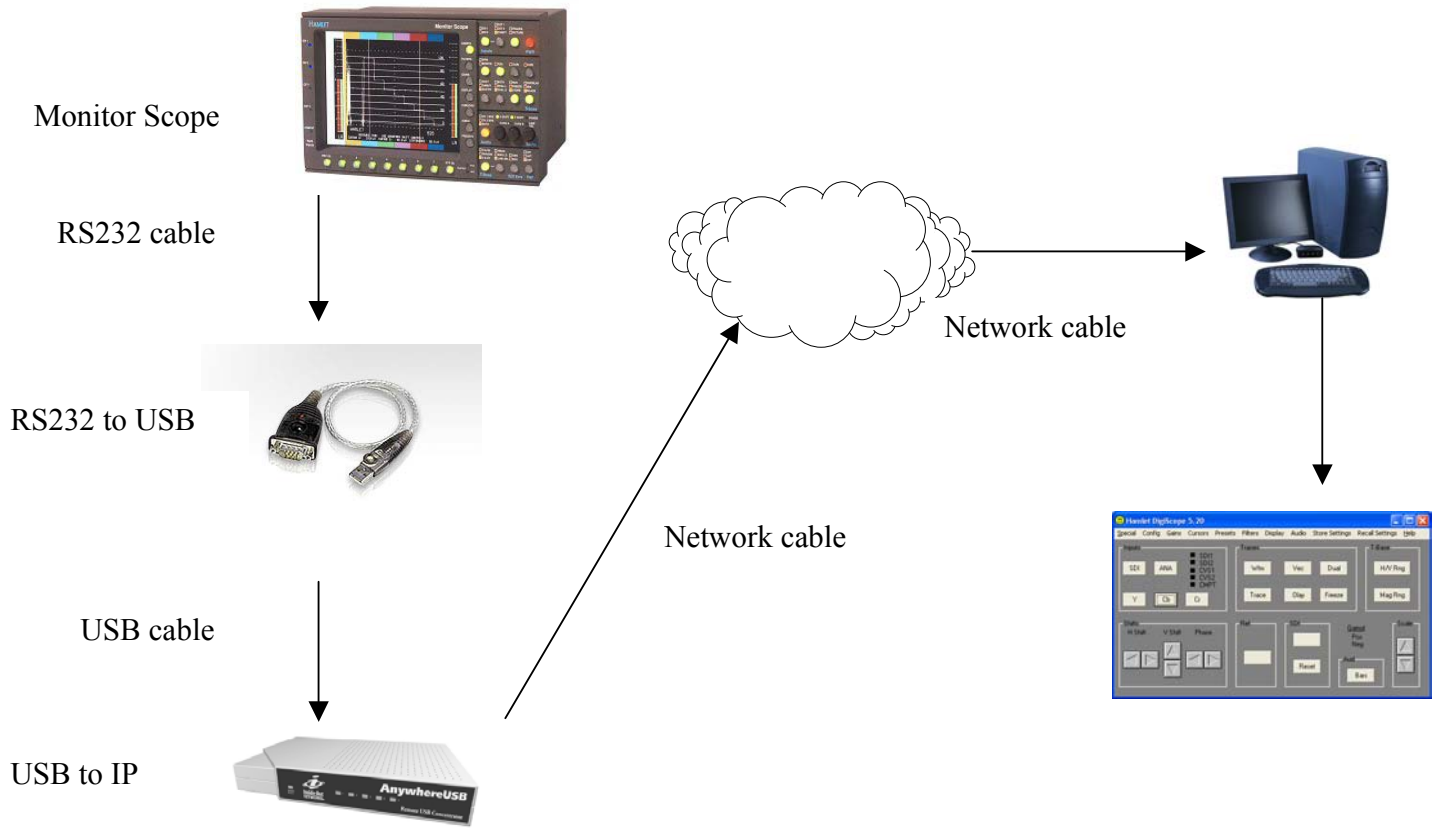


Fig 1 Example network layout

## Installation

1) Connect PC to network

2) Check Monitor Scope operation by directly connecting Monitor Scope to PC by RS232 cable and operate the installed Monitor Scope software.

3) Install the USB to IP converter.

In this Application note the Ionetworks AnywhereUSB will be used  
Connect the AnywhereUSB to the network

4) Install on the remote PC which will be running the Monitor Scope software the AnywhereUSB drivers and configure routine. (Refer to converter box manual for more information on its setup an IP address is required)

The lights on the AnywhereUSB should stop scanning if not update the drivers from Ionetworks web site.

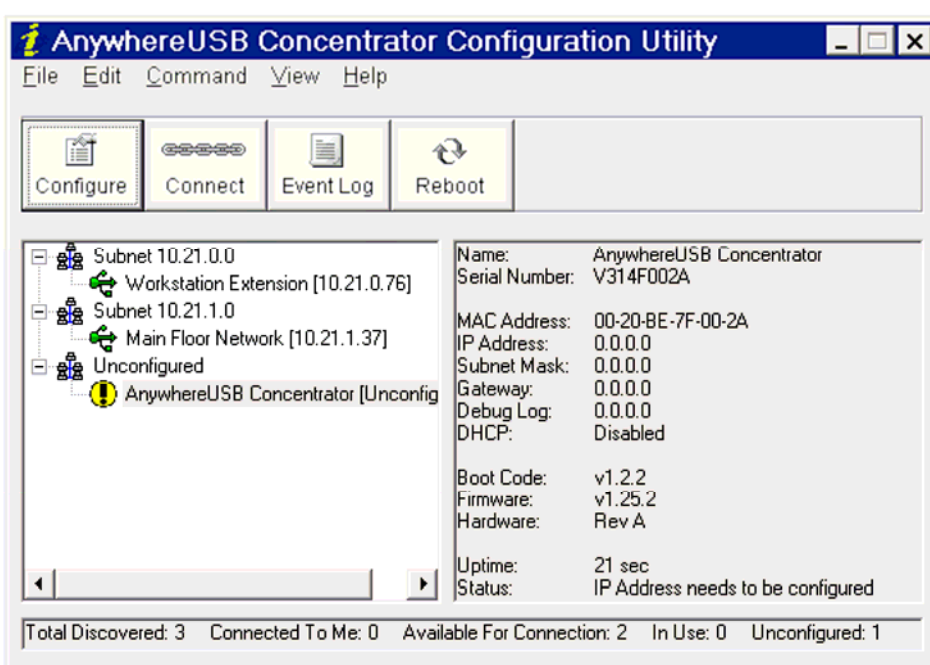


Fig 2 AnywhereUSB configure screen

5) Select the AnywhereUSB hub where the Monitor Scope you require will be connected, from the available units in the configure software and then use the connect button to enable the communication between the PC and the Monitor Scope.

- 6) Connect Monitor Scope to UC-232A USB to RS-232 Adapter using an RS232 cable
- 7) Connect UC-232A USB to RS-232 Adapter to AnywhereUSB converter
- 8) Turn Monitor Scope on.
- 9) Start the Monitor Scope software
- 10) Check the COM port setting of the UC-232A USB to RS-232 Adapter using the PC control panel /system/hardware/device manager screen (further instructions supplied with UC-232A USB to RS-232 Adapter) the port number will be shown on the Ports section under RS232 adapter (make sure the com port is numbered between 2 and 4)

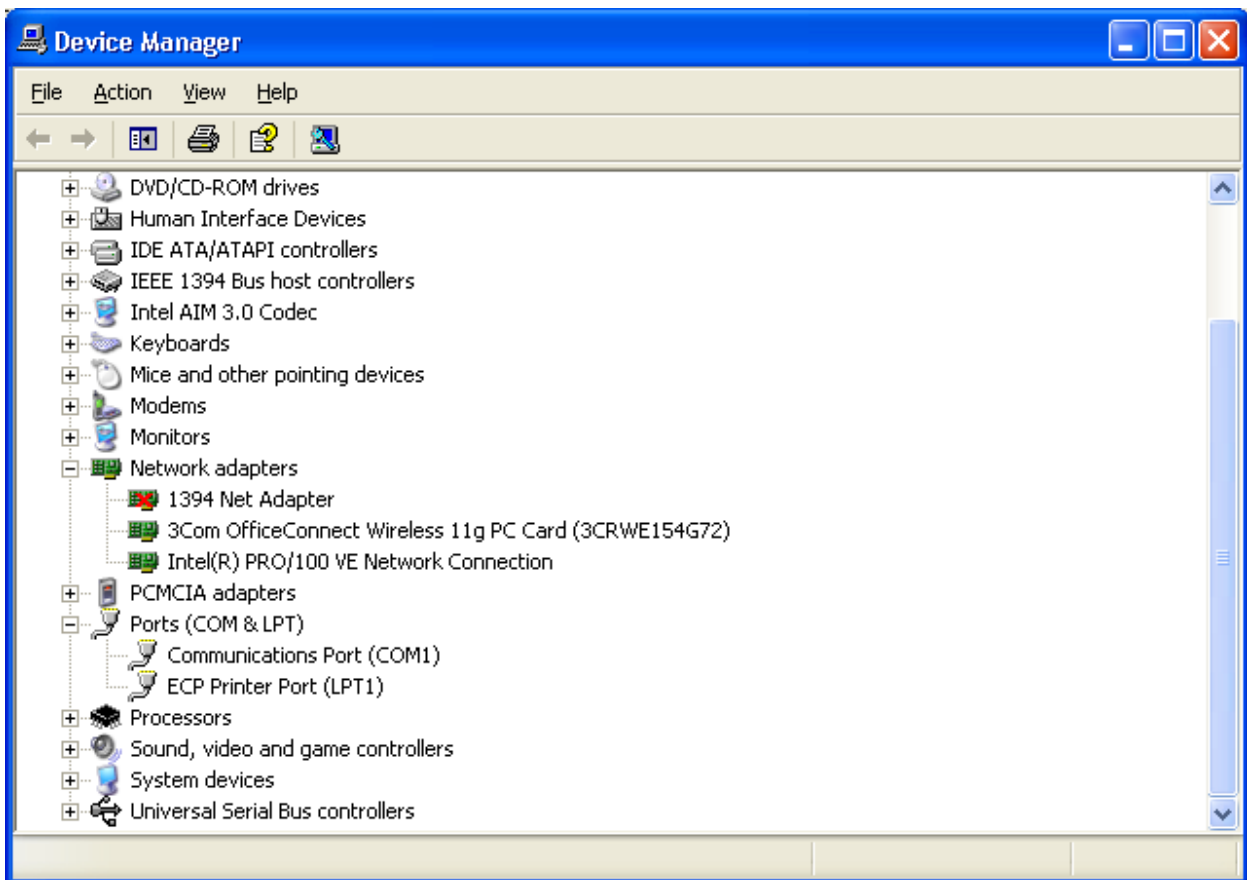


Fig 3 Control panel device manger screen

11) Using the setup menu on the Monitor Scope software under the Special menu select the correct RS232 port as shown in the control panel and baud rate as shown on the Monitor Scope.

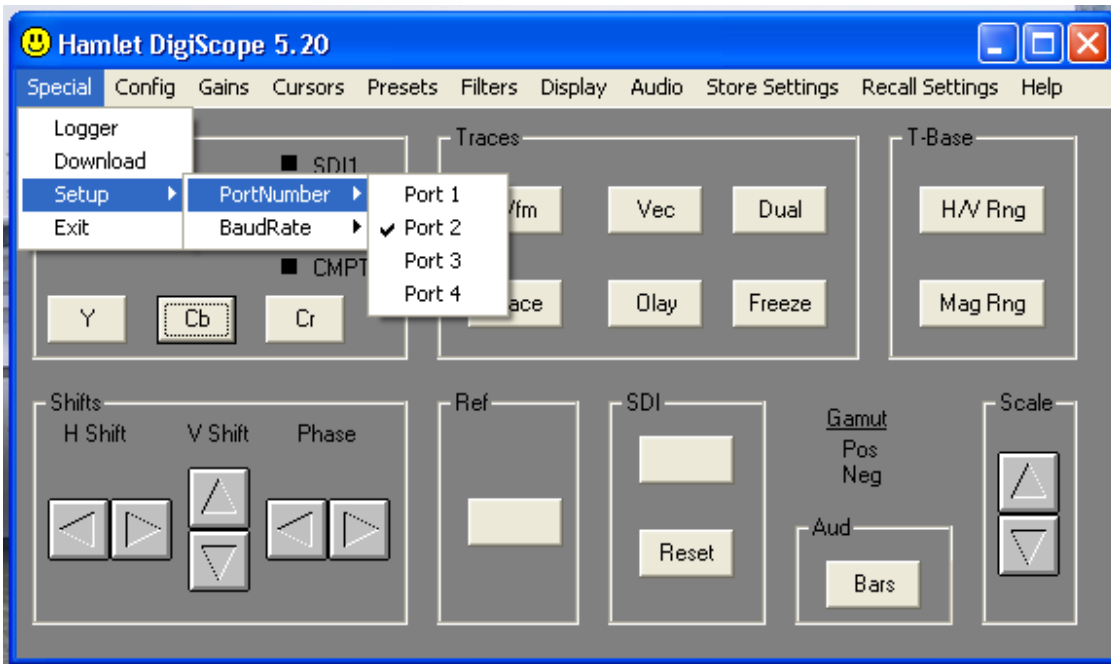


Fig 4 Monitor Scope Remote control software screen

## **APPENDIX A**

### **Trouble Shooting**

If the PC can't communicate with the Monitor Scope an Error message will appear in the application window. It is necessary to check that RS232 link is correctly setup.

- 1) Is the RS232 to USB converter cable connected to the USB to IP converter?
- 2) Is the RS232 cable connected to Monitor Scope?
- 3) Is the RS232 cable connected to RS232 to USB converter cable?
- 4) Is the Monitor Scope powered up correctly?
- 5) Turn the Monitor Scope off then on again to allow USB to recognize that the the Monitor Scope is attached
- 6) Are the AnywhereUSB lights static if not update the AnywhereUSB drivers



## USEFUL WEBSITES

<b>HAMLET</b>	<b>www.hamlet.co.uk</b>	
<b>HAMLET (USA)</b>	<b>www.hamlet.us.com</b>	
<b>SMPTE</b>	<b>www.smpte.org</b>	<b>Society of Motion Picture Television Engineers</b>
<b>DIN</b>	<b>www.din.de</b>	<b>German Standards Institute</b>
<b>EBU</b>	<b>www.ebu.ch</b>	<b>European Broadcasting Union</b>
<b>AES</b>	<b>www.aes.org</b>	<b>Audio Engineering Society</b>
<b>ITU</b>	<b>www.itu.int</b>	<b>International Telecommunication Union</b>
<b>IONetworks</b>	<b>www.ionetworks.com</b>	<b>Anywhere USB</b>

## CONTACT DETAILS AND CUSTOMER SUPPORT

For any form of assistance in maintaining your Digi Scope, please contact:

Hamlet Video International Limited  
Maple House 11 Corinium Business Centre Raans Road Amersham Bucks HP6 6FB England  
Main Line: +44 (0)1494 729 728  
Fax Line: +44 (0)1494 723 237  
Free phone (UK) 0500 625 525  
E-mail: sales@hamlet.co.uk Web site: www.hamlet.co.uk

Hamlet Video International USA service center , Tecads Inc, 23 Del Padre St, Foothill Ranch,  
CA 92610, U.S.A.  
Tel: +1 (949) 597 1053,  
Fax: +1 (949) 597 1094.  
Toll Free Tel number: (866) 4 HAMLET  
E-mail: service@hamlet.us.com Web site: www.hamlet.us.com

In correspondence concerning this instrument, please quote the serial number, which you will find printed on the label at the back of the unit.