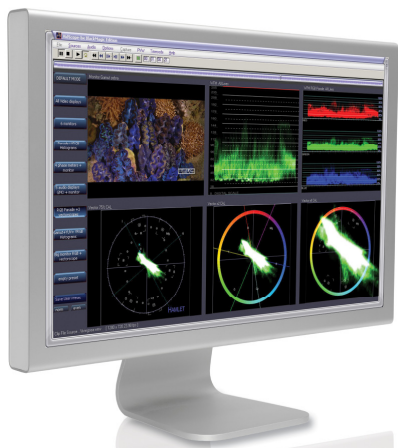


### Software scope for HD/SD/HDV/DV via capture card or files - download from website



#### Features and Functions

- Absolute accuracy on a Windows® platform.
- SD,HD or 3G - 4:2:0 or 4:2:2 signal formats, files or live capture
- 6 simultaneous user configurable displays with 9 user presets
- Display coloured traces of your choice, on any sized monitor or dual screens
- Up to 16 audio channels in any audio scale
- Unique GMO surround sound monitoring
- Highly accurate gamut error diagnostics
- Zoom any display to full-size
- Download from Hamlet Web site

It comes complete with monitoring for editors and colourists. With a level of technical accuracy which engineers and operators alike will be delighted with, it is second to none - with the capability to assess composite thru to full HD.

VidScope-BX™ offers the very highest R.O.I. without the need to restrict your viewing panel size or capture card type.

With Vidscope-BX™ you don't need any dedicated hardware, just a dual core or better PC with a 3D graphics adapter. It allows freeform rescaling of entire window group or each display pane and so fits any size screen. It allows up to 6 customized picture monitors or even just one big one. BX even works with HDV or DV source over Firewire. It can show different vectorscope modes & scales simultaneously for accurate grading and has histogram modes for both Y and RGB either separately or as a parade.

You can have any combination of picture monitor modes including simultaneous YRGB, with broadcast accurate gamut measurement, display and alarm monitoring. It also accepts 1 to 16 channels of audio in any format and has a GMO surround display and can display many scopes at once.

You only need the capture card that meets your needs: be it SDI, dual-link, 3Gb, HDMI, analogue or optical.

See [VidScope-BX](#) screen shots to provide a clear understanding of its capability.

See our website for applications

[www.hamlet.co.uk](http://www.hamlet.co.uk)

## **TECHNICAL SPECIFICATION**

The performance of software is directly related to the PC, CPU, GPU memory and inputs and outputs used. VidScope is no different. Depending on the signal types you wish to investigate and the displays selected, the higher the processing and the better the graphics card will result in the very best performance with the highest signal standards.

Windows XP, Vista or 7

Intel or AMD Processor 4 cores or more needed for realtime , 3G and HD operation

Graphics Card: graphics cards that may be used from the NVidia range include.. GTX260, GTX275, GTX470, GTX480, GTX560, GTX570, GTX580. ATI cards do not support for all product functions.

System memory 2 to 3Gb

Live Capture device(s) must have DirectShow drivers such as Black Magic, AJA, Bluefish, Imprex, Black Magic, even composite or component to USB video grabbers work like Black Magic's Video Recorder.

Laptop operation is possible subject to the above and can use of a suitable input device, firewire and USB inputs.

File types supported are subject to Codecs on the PC

**WARRANTY:** - 1 Year.

Extendable free on registration:- To 2 Years

By using the service area of our web site

<http://www.hamlet.co.uk/support/warranty/>

### **ORDERING INFORMATION**

**VidScope-BX download via web**

Software based waveform monitor and vectorscope tailored to work with any suitable video card or similar device on a Windows PC.

**Supplied as a download from Hamlet web site**

<http://www.hamlet.co.uk/products/software/vidscope-bx-download/>

**Trial of software available to download from the Hamlet web site**

<http://www.hamlet.co.uk/products/software/vidscope-bx-download/>



Specifications and features herein are subject to change without prior notice. Hamlet Video International Limited products are covered by a number of Applied or Granted UK, North American and World Patents. Prior art is claimed in All Territories on features and functions incorporated in the product designs herein. Hamlet is a registered Trademark of Hamlet Video International Limited. Flexiscope, Whichwire and Videoscope are registered Trademarks of Hamlet Video International Limited. Monitor Scope, Digi Scope, Adept, LCD Scope, Protean, Digi Gen, VidScope, AudioChex, GenPen, Micro Scope, Pico Scope, PC Scope, Chameleon, Digital Window, Programme Level Meter and Stereo Scope are Trade Marks of Hamlet Video International Limited.

**Hamlet products are Manufactured to ISO9001.2000 and ISO14001 specification.**

Our most up to date information is available on our web site.

Copyright © 2012 Hamlet Video International

15/07/2012

**Hamlet Video International Ltd**, Maple House, 11 Corinium Business Centre, Raans Road, Amersham, Bucks, HP6 6FB, England. Tel: - +44 (0) 1494 729 728 Fax: - +44 (0) 1494 723 237 Freephone (UK): - 0500 625525 E-mail: [sales@hamlet.co.uk](mailto:sales@hamlet.co.uk) Website: [www.hamlet.co.uk](http://www.hamlet.co.uk)

**HAMLET**<sup>®</sup>  
**EXCELLENCE IN VISION**

**USA Master Distribution, Omnivue** New York, NY 10016 USA  
Tel: - +866-4-HAMLET or 001 212 779 2580 Website: [www.hamlet.tn](http://www.hamlet.tn)