

# Hamlet Precision HDW5

## QUICKSTART GUIDE

### 5.6" HD-SDI LCD Waveform Monitor



#### What's included

- ☐ 1 x Monitor
- ☐ 1 x AC Adapter
- ☐ 1 x DV Battery Adapter (Check one) —
  - ☐ BP5-S Sony "L" Series
  - ☐ BP5-SU Sony "BP-U" Series
  - ☐ BP5-C Canon "900" Series
  - ☐ BP5-E6 Canon E6 Battery
  - ☐ BP5-P Panasonic "D54" Series
  - ☐ BP5-PG6 Panasonic G6 Battery

---

#### CONDITIONS OF STANDARD RETURN TO BASE WARRANTY

- Free service for one year from the day of purchase if the problem is caused by manufacturing errors.
- The components and maintenance service fee will be charged if the warranty period has expired.

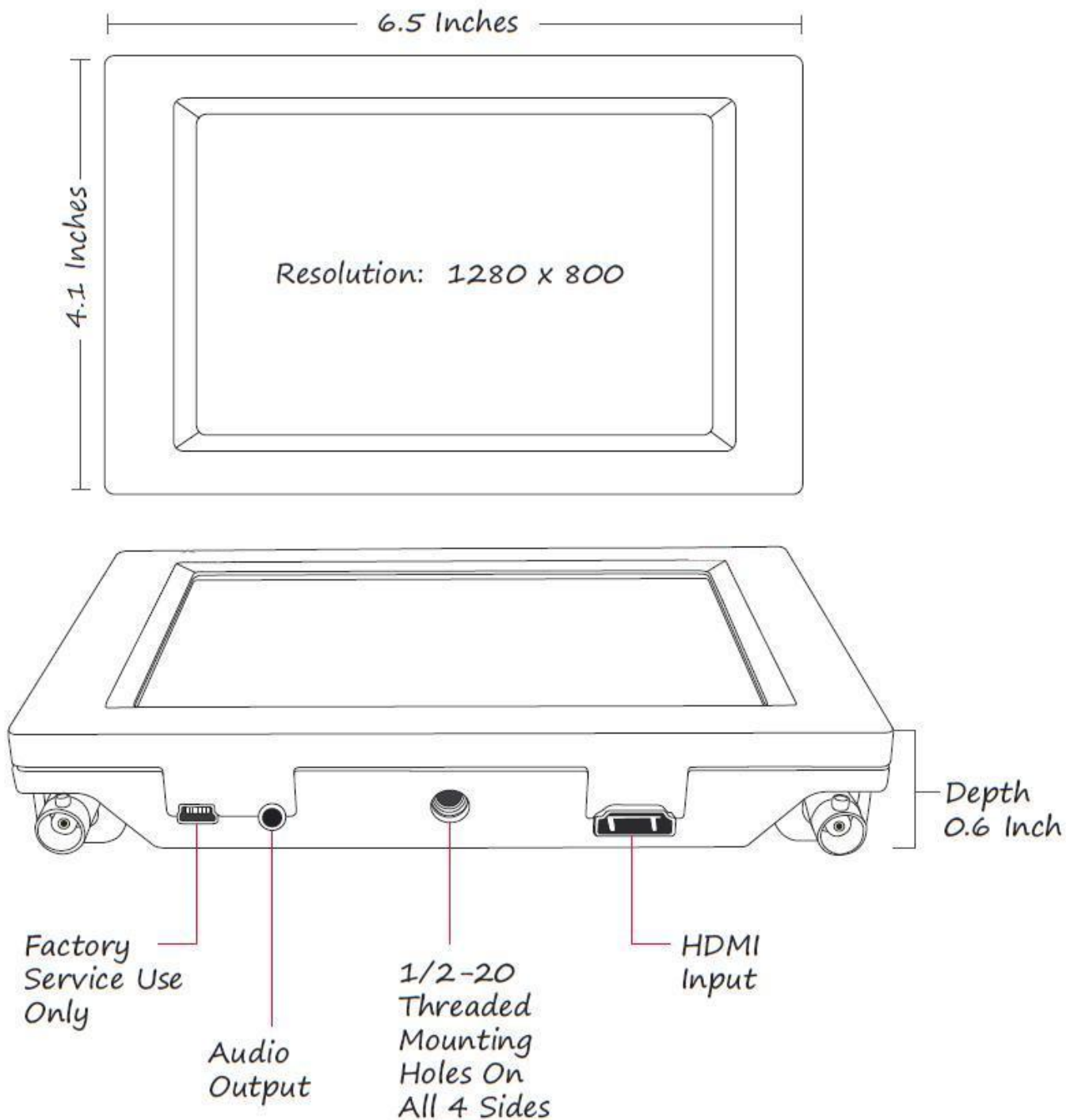
Free Service will not be Provided in the Following Situations: (\* Even if the product is still within the warranty period.)

- Damage caused by abuse or misuse, dismantling, or changes to the product not made by the company.
- Damage caused by natural disaster, abnormal voltage, and environmental factors etc.

# Hamlet Precision HDW5

## QUICKSTART GUIDE

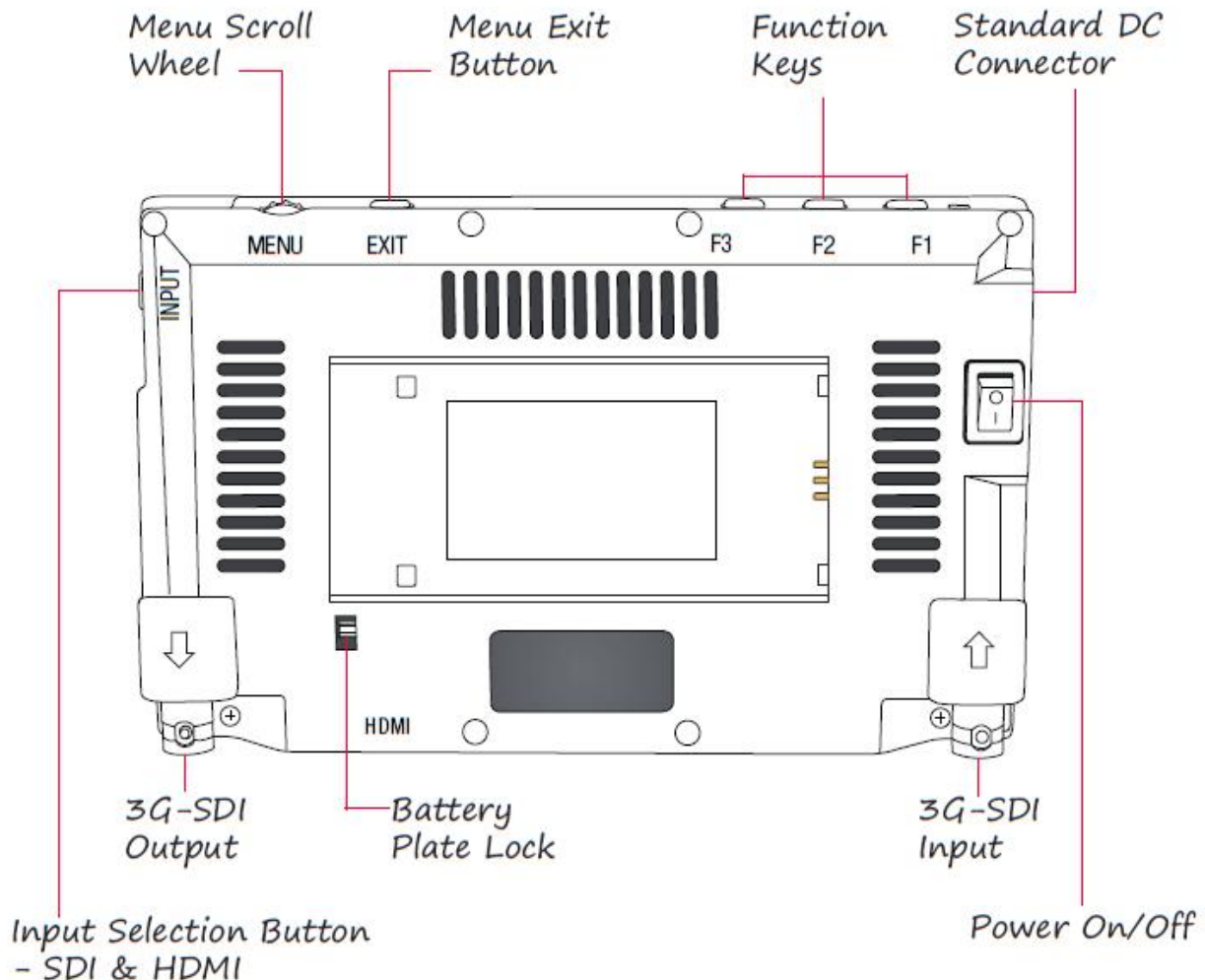
### 5.6" HD-SDI LCD Waveform Monitor



# Hamlet Precision HDW5

## QUICKSTART GUIDE

### 5.6" HD-SDI LCD Waveform Monitor



#### SPECIFICATIONS

|                  |                          |
|------------------|--------------------------|
| Diagonal:        | 5.6-inch                 |
| Resolution:      | 1280 x 800               |
| LCD Brightness:  | 300 NIT                  |
| Contrast Ratio:  | 400:1                    |
| Viewing angles:  | 160 (H) 160 (V)          |
| Operating Volts: | DC 6v to 24v             |
| Dimension:       | 4.1" H x 6.5" W x 0.9" D |
| Weight:          | 0.6 lbs                  |
| Video Inputs:    | HD-SDI, HDMI             |
| Video Outputs:   | HD-SDI                   |
| Audio Output:    | Headphone                |

#### SUPPORTED RESOLUTIONS & FRAME RATES

|         |   |
|---------|---|
| 3G SDI: | 1920x1080p @ 50, 59.94, 60 Hz                           |
| HD SDI: | 1280x720p @ 50, 59.94, 60 Hz                            |
|         | 1920x1080i @ 50, 59.94, 60 Hz                           |
|         | 1920x1080psf @ 23.98, 24, 25, 29.97, 30 Hz              |
|         | 1920x1080p @ 23.97, 24, 25, 29.94, 30 Hz                |
| SD SDI: | 720x480i @ 60Hz   |
|         | 720x576i @ 50Hz   |
| HDMI:   | 720x480i & 720x480p @ 59.94, 60 Hz                      |
|         | 720x576i & 720x576p @ 50 Hz                             |
|         | 1280x720p @ 50, 59.94, 60 Hz                            |
|         | 1920x1080i @ 50, 59.94, 60 Hz                           |
|         | 1920x1080psf @ 24, 25, 29.97, 30 Hz                     |
|         | 1920x1080p @ 23.97, 24, 25, 29.94, 30, 50, 59.94, 60 Hz |



## 5.6" HD-SDI LCD Waveform Monitor

### CONFIGURATION OF SETTING MENUS

#### GUIDES

|               |                       |
|---------------|-----------------------|
| Guides Full   | OFF / 90% / 80% / 4:3 |
| Guides 16:9   | OFF / 90% / 80% / 4:3 |
| Guides 4:3    | OFF / 90% / 80%       |
| G. Background | Normal / Half / Black |
| Crosshair     | Off / On              |
| Return        |                       |

#### Notes:

<sup>1</sup> DSLR Scaling (for HDMI only)

Display a crosshair on the center of screen.

#### VIDEO CONFIGURATION

|             |                                |
|-------------|--------------------------------|
| Brightness  | 0-100                          |
| Contrast    | 0-100                          |
| Chroma      | 0-100                          |
| Sharpness   | 0-100                          |
| Tint        | 0-100                          |
| Color Temp. | 5600K / 6500K / 9300K / Manual |
| Auto        |                                |
| Return      |                                |

This function recalls user defined values settings .The user setting will remain in memory indefinitely and can be erased by using the reset option in the main menu.

#### SYSTEM CONFIGURATION

|                   |                         |
|-------------------|-------------------------|
| OSD Language      | English                 |
| OSD Duration      | 5-60                    |
| Menu Setup        | User1-5                 |
| Backlight         | 5-100                   |
| DSLR Auto Scaling | Off / Full / 16:9 / 3:2 |
| WF Background     | 0-10                    |
| Peaking Setting   |                         |
| Peaking Factor    |                         |
| Peaking Color - R | 0-255                   |
| Peaking Color - G | 0-255                   |
| Peaking Color - B | 0-255                   |
| System Reset      |                         |
| Return            |                         |

The DSLR Scaling<sup>1</sup> function will allow users to extend their DSLR camera's HDMI video output any option of four – Normal, 3:2, 16:9 or Full Screen – convenience made simple.

Allows you to adjust the transparency of the Waveform when overlaid on the bottom of the screen.

Allows you to adjust the sensitivity of the peaking feature from 1 - 10.

Allows you to change the color of the peaking outlines from 0 -255 for red, blue, and green.

#### Waveform

This essential feature assists with the calibration of professional video cameras. It shows the overall brightness of the image assisting the video professional in correcting exposure. The waveform feature also checks the evenness of the lighting when lighting a chromakey or background.

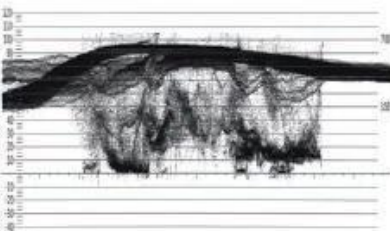


Fig 1

#### Vectorscope

The vectorscope is used to help set and verify skin tones and monitor white balance. The vectorscope function also verifies and checks the overall tint and hue of an image.

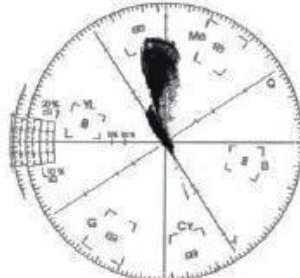


Fig 2

#### RGB Parade

The RGB parade splits the image in to separate red, green, and blue channels and shows you the color values for each. RGB Parade is fundamental in balancing out the shadow region when leveling a shot. Furthermore, this feature helps the video professional to instantly see what color cast might be in an image; thus, making it extremely helpful when verifying the white balance.

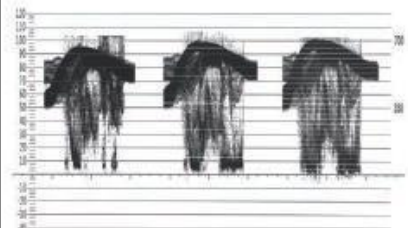
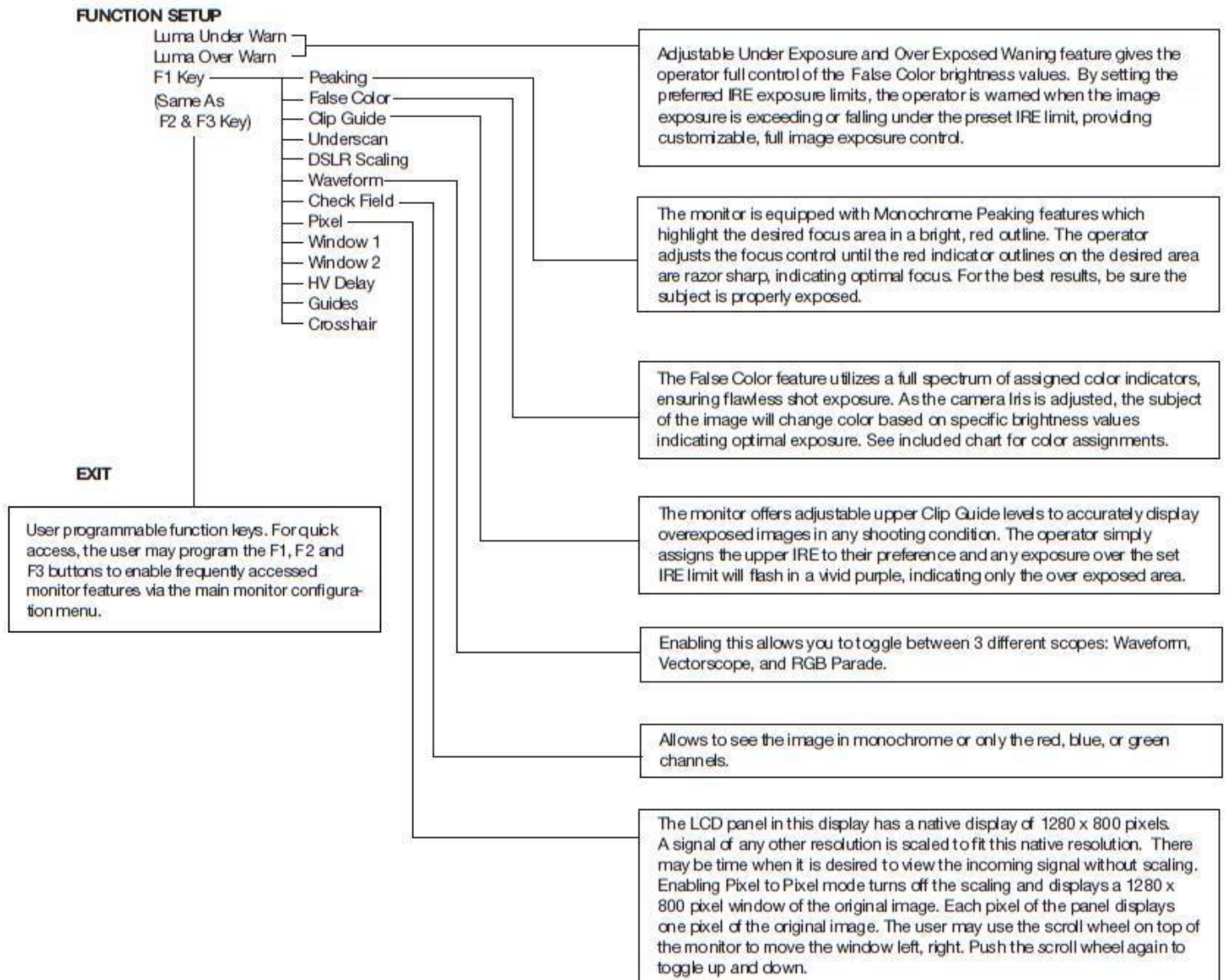


Fig 3

Fig 1, 2 and 3 for guidance only

## 5.6" HD-SDI LCD Waveform Monitor

### CONFIGURATION OF SETTING MENUS CONTINUED



## 5.6" HD-SDI LCD Waveform Monitor

Use the adjustable warning to prevent over exposures in your video

Use the 70 - 80 IRE indicators to assist in setting exposure for white objects.

Use the 56 IRE indicator to assist in setting exposure for skin tones

Use the 45 IRE indicator in assist in setting exposures when using a gray card

Use the adjustable warning to prevent under exposures in your video

